

905 NW 2ND AVENUE
 DELRAY BEACH, FLORIDA

SEASIDE BUILDERS
 DELRAY BEACH, FLORIDA

FLORIDA LICENSURE

AA26001617 | IB26001056

COMMISSION # 19-068
 DESIGNER: RJ
 DRAWN BY: GsJ/JH
 PLAN REVIEW: RJ

SUBMITTALS:
 REVIEW SET 03.23.20

REVISIONS:

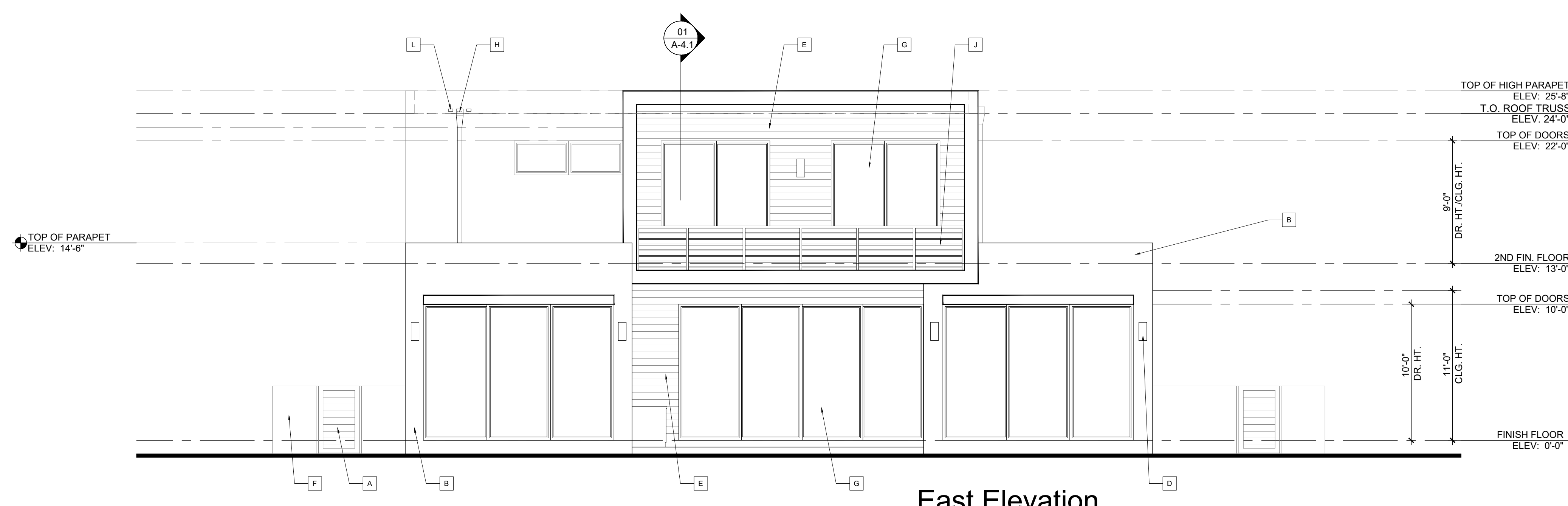
WEST &
 EAST
 ELEVATIONS

A-3.1



West Elevation

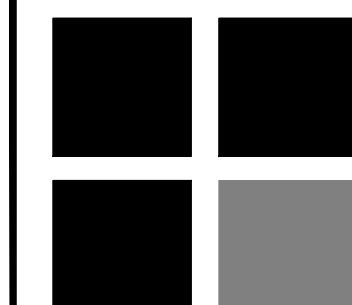
Scale: 3/16"=1'-0"



East Elevation

Scale: 3/16"=1'-0"

BUILDING COLORS		ELEVATION NOTES	
WALLS: SHERWIN WILLIAMS 'PURE WHITE' SW7005	A	ALUMINUM GATE W/ INSET MEDIUM 'WOOD' GEL-STAINED BORAL TRU EXTERIOR APPLIED MATERIAL (PROVIDE NOA & SAMPLE OF COLOR FOR ARCHITECT'S REVIEW)	J
WINDOW AND DOOR FRAMES: BRONZE	B	SMOOTH STUCCO FINISH	K
GARAGE DOOR: MEDIUM 'WOOD' GEL-STAINED BORAL TRU EXTERIOR APPLIED MATERIAL (SEE DOOR SCHEDULE) PROVIDE NOA & SAMPLE OF COLOR FOR ARCHITECT'S REVIEW	C	FLUSH PANEL GARAGE O.H.D. W/ MEDIUM 'WOOD' GEL-STAINED BORAL TRU EXTERIOR APPLIED MATERIAL (SEE DOOR SCHEDULE) PROVIDE NOA & SAMPLE OF COLOR FOR ARCHITECT'S REVIEW	L
RAILINGS: BRONZE	D	BRONZE LIGHT FIXTURE (TO BE SELECTED BY OWNER)	M
SIDING: APPLIED MEDIUM 'WOOD' GEL-STAINED BORAL TRU EXTERIOR	E	MEDIUM 'WOOD' GEL-STAINED BORAL TRU EXTERIOR APPLIED MATERIAL (PROVIDE NOA & SAMPLE OF COLOR FOR ARCHITECT'S REVIEW)	N
	F	MASONRY WALL WITH SMOOTH STUCCO FINISH (REFER TO STRUCTURAL DRAWINGS)	P
	G	IMPACT RESISTANT WINDOW & DOOR W/ BRONZE FRAME (PROVIDE SHOP DRAWINGS FOR ARCHITECT'S APPROVAL)	R
	H	STORM DRAIN LEADER ROUTE FROM FLAT ROOF TO GRADE - G.C. TO COORDINATE CONNECTION TO STORM WATER (REFER TO CIVIL DRAWINGS)	T



905 NW 2ND AVENUE
 DELRAY BEACH, FLORIDA

SEASIDE BUILDERS
 DELRAY BEACH, FLORIDA

FLORIDA LICENSURE

AA26001617 | IB26001056

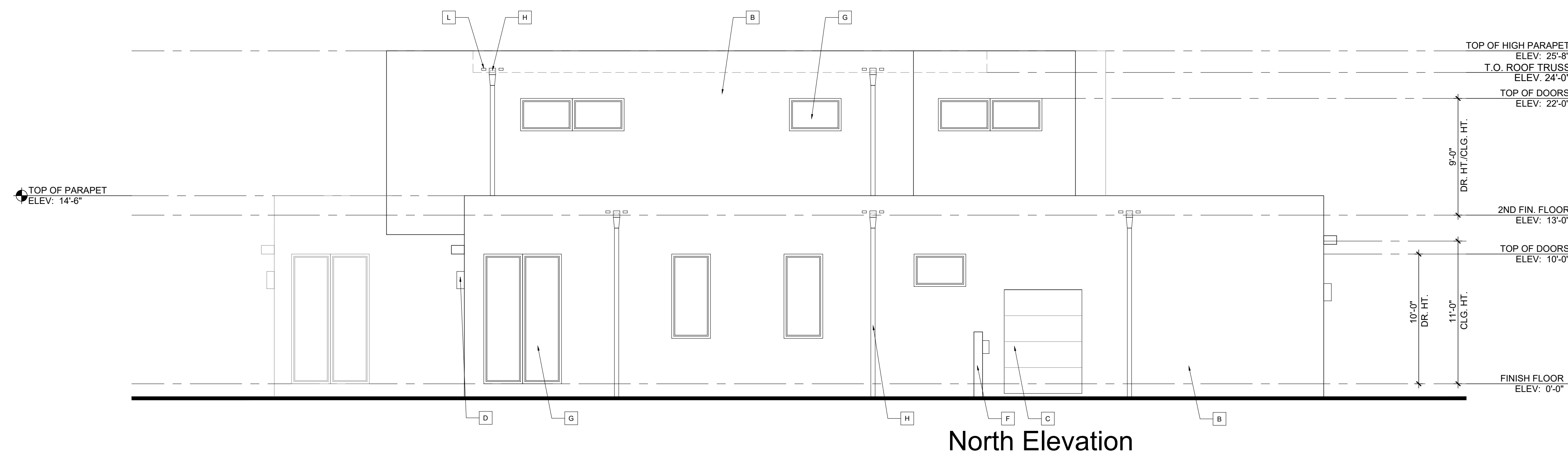
COMMISSION # 19-068
 DESIGNER: RJ
 DRAWN BY: GsJ/JH
 PLAN REVIEW: RJ

SUBMITTALS:
 REVIEW SET 03.23.20

REVISIONS:

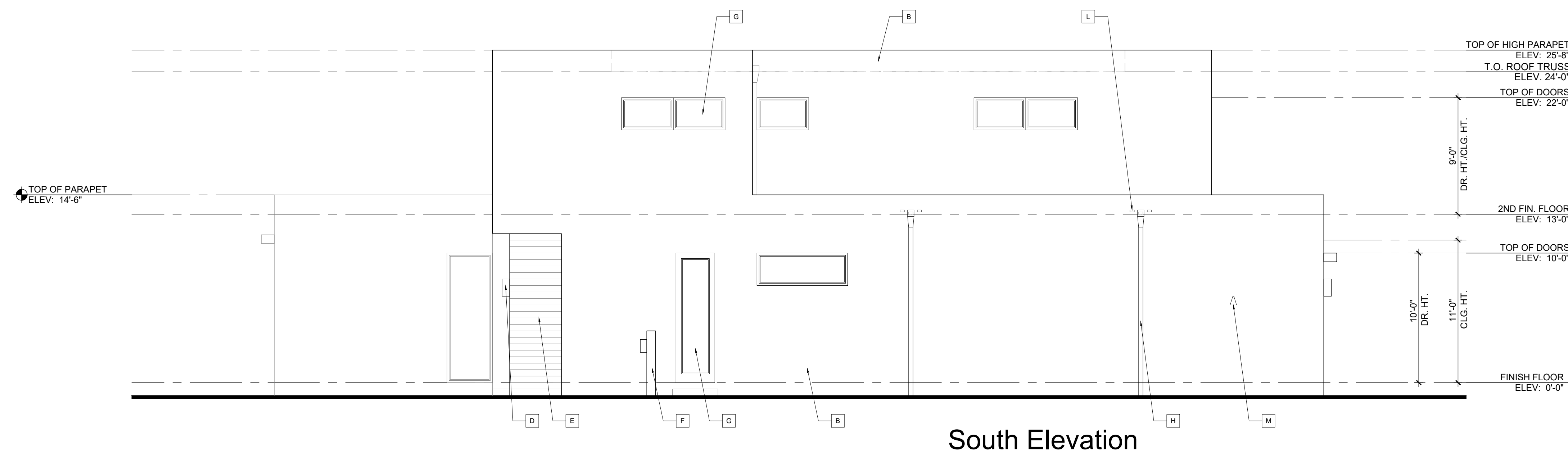
NORTH &
 SOUTH
 ELEVATIONS

A-3.2



North Elevation

Scale: 3/16"=1'-0"



South Elevation

Scale: 3/16"=1'-0"

BUILDING COLORS		ELEVATION NOTES	
WALLS: SHERWIN WILLIAMS 'PURE WHITE' SW7005	A	ALUMINUM GATE W/ INSET MEDIUM 'WOOD' GEL-STAINED BORAL TRU EXTERIOR APPLIED MATERIAL (PROVIDE NOA & SAMPLE OF COLOR FOR ARCHITECT'S REVIEW)	J
WINDOW AND DOOR FRAMES: BRONZE	B	SMOOTH STUCCO FINISH	K
GARAGE DOOR: MEDIUM 'WOOD' GEL-STAINED BORAL TRU EXTERIOR	C	FLUSH PANEL GARAGE O.H.D. W/ MEDIUM 'WOOD' GEL-STAINED BORAL TRU EXTERIOR APPLIED MATERIAL (SEE DOOR SCHEDULE) PROVIDE NOA & SAMPLE OF COLOR FOR ARCHITECT'S REVIEW	L
RAILINGS: BRONZE	D	BRONZE LIGHT FIXTURE (TO BE SELECTED BY OWNER)	M
SIDING: APPLIED MEDIUM 'WOOD' GEL-STAINED BORAL TRU EXTERIOR	E	MEDIUM 'WOOD' GEL-STAINED BORAL TRU EXTERIOR APPLIED MATERIAL (PROVIDE NOA & SAMPLE OF COLOR FOR ARCHITECT'S REVIEW)	N
	F	MASONRY WALL WITH SMOOTH STUCCO FINISH (REFER TO STRUCTURAL DRAWINGS)	P
	G	IMPACT RESISTANT WINDOW & DOOR W/ BRONZE FRAME (PROVIDE SHOP DRAWINGS FOR ARCHITECT'S APPROVAL)	R
	H	STORM DRAIN LEADER ROUTE FROM FLAT ROOF TO GRADE - G.C. TO COORDINATE CONNECTION TO STORM WATER (REFER TO CIVIL DRAWINGS)	T