

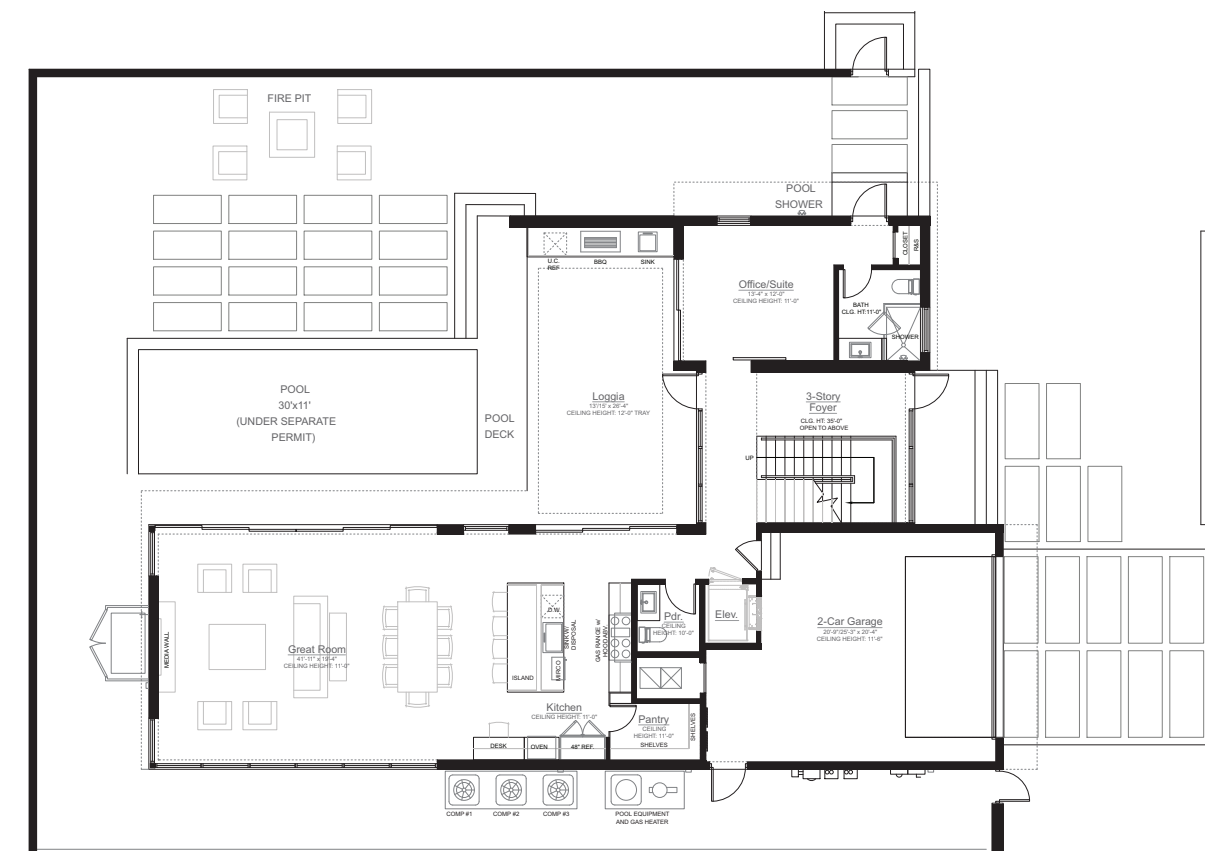
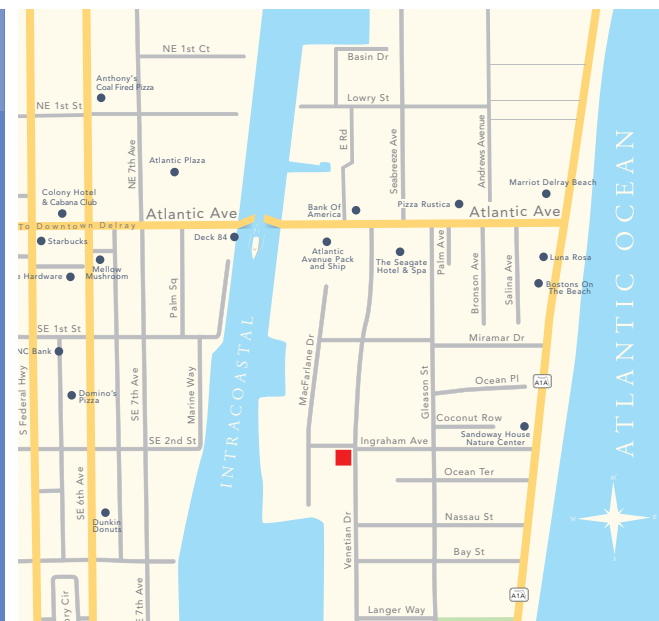


NEW CONSTRUCTION

202 VENETIAN DRIVE
DELRAY BEACH, FLORIDA
\$4.295 MILLION

BEDROOMS 4
BATHS 4.1
TOTAL SQ. FT. 5,845±
INFO: www.rx10324354.com

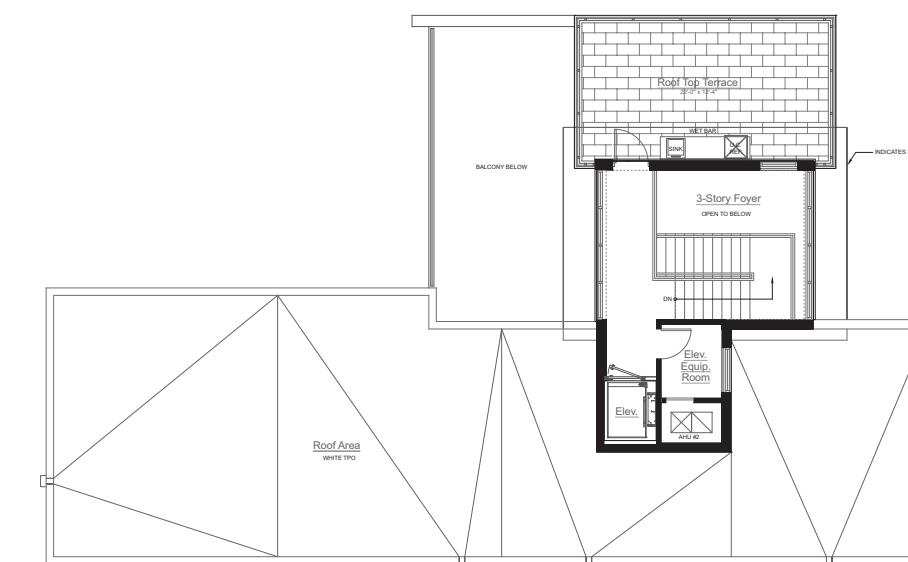
PascalLiguoriAndSon.com



Ground Floor Plan
NOT TO SCALE



Second Floor Plan
NOT TO SCALE



Roof Top Plan
NOT TO SCALE

No one designs with the drama, the flair of distinguished architect Richard Jones. Renowned developer Seaside Builders brings his remarkable 3-story plan to fruition with quality, integrity and great style.

The L-shaped open concept first level features a stunning 3-story foyer, a great room with wall-to-ceiling impact glass, an island kitchen with high-end cabinetry and top-of-the-line appliances, a private office/bedroom suite, powder room and 2-bay garage.

A second story features three spacious bedrooms with ensuite baths, roomy walk-in closets, private balconies off the master suite, separate club room and a convenient laundry area. The third floor sun terrace provides a commanding view of a sleek private pool, situated beyond a covered loggia, inside a defining wall.

The result is a truly modern statement, with superb finishings, in shades of sand that soften its strong, clean lines. Beautifully located on a corner lot in the heart of Delray, a short walk from the serenity of the beach and non-stop energy of Atlantic Avenue, this brand new residence offers the very best elements of Delray's coastal lifestyle.

Floor Plans

Building Area Calculations

| | |
|----------------------------------|----------------------|
| Ground Floor A/C | 1,705 sq. ft. |
| Second Floor A/C | 2,098 sq. ft. |
| Third Floor A/C | 228 sq. ft. |
| Total A/C | 4,031 sq. ft. |
| Garage | 508 sq. ft. |
| Loggia | 384 sq. ft. |
| Terrace At Second Floor | 384 sq. ft. |
| Balcony | 232 sq. ft. |
| Roof Top Terrace | 306 sq. ft. |
| Total Building Floor Area | 5,845 sq. ft. |

For more information please call

PASCAL LIGUORI

BROKER ASSOCIATE

561.278.0100

Pascal@PremierEstateProperties.com

ANTONIO LIGUORI

BROKER ASSOCIATE

561.414.4849

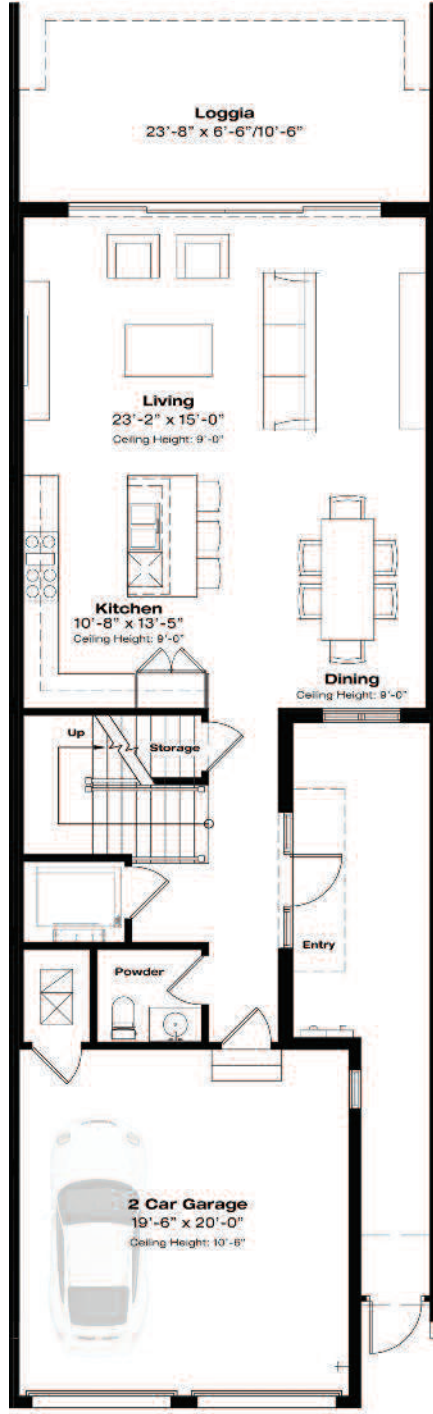
Antonio@PremierEstateProperties.com

DISCLAIMER: The written and verbal information provided including but not limited to prices, measurements, square footages, lot sizes, calculations and statistics have been obtained and conveyed from third parties such as the applicable Multiple Listing Service, public records as well as other sources. All prices are either list price, sold price, and/or last asking price. Premier Estate Properties has listed, sold or participated in the sale of these properties. The transactions representing both buyers and sellers are calculated twice. Premier Estate Properties' marketplace is all of the following: Vero Beach, Town of Orchid, Indian River Shores, Town of Palm Beach, West Palm Beach, Manalapan Beach, Point Manalapan, Hypoluxo Island, Ocean Ridge, Gulf Stream, Delray Beach, Highland Beach, Boca Raton, East Deerfield Beach, Hillsboro Beach, Hillsboro Shores, East Pompano Beach, Lighthouse Point, Sea Ranch Lakes and Fort Lauderdale. All written and verbal information including that produced by the Sellers or Premier Estate Properties are subject to errors, omissions or changes without notice and should be independently verified by any prospective purchaser of a Property. The Sellers and Premier Estate Properties Inc. expressly disclaim any warranty or representation regarding all information. Prospective Purchasers' use of any written and verbal information is acknowledgement of this disclaimer and that the prospective purchaser shall perform their own due diligence. In the event a Buyer defaults, no commission will be paid to either Broker on the Deposits retained by the Seller. "No Commissions Paid until Title Passes." Prospective purchasers shall not rely on this information when entering into a contract for sale and purchase. Some affiliations may not be applicable to certain geographic areas. If your property is currently listed, please do not consider this a solicitation. Copyright 2018 Premier Estate Properties Inc. All Rights Reserved. The name "Pascal Liguori & Son" is a registered fictitious name in Florida owned by Pascal Liguori, Inc., a Florida corporation.

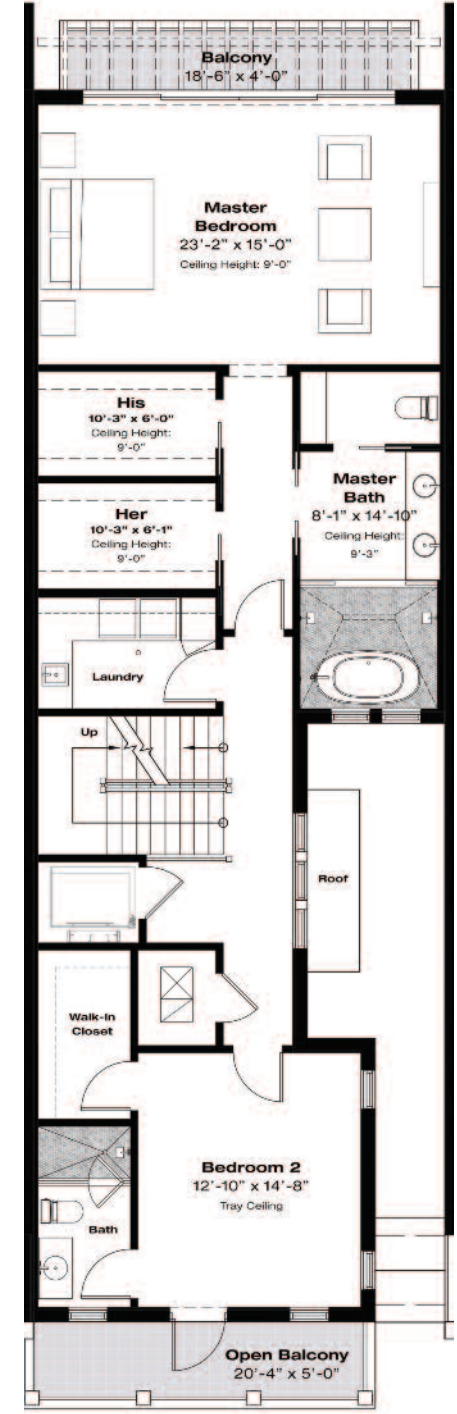
IDEALLY LOCATED 1 BLOCK FROM BOTH ATLANTIC AVENUE AND THE ATLANTIC OCEAN



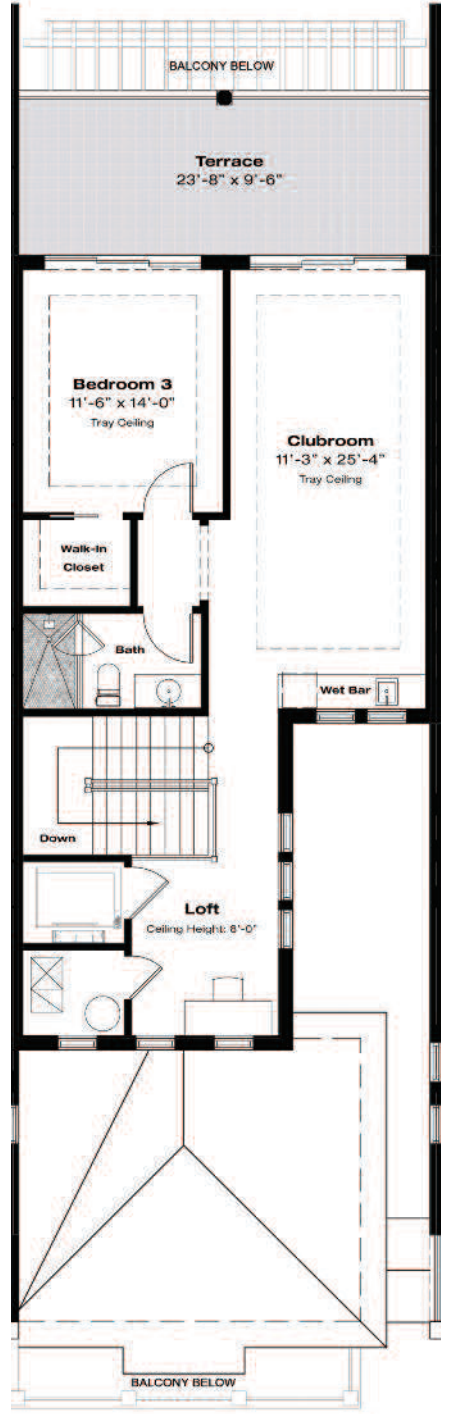
SEAGLASS COTTAGES



TH-C Ground Floor Plan
NOT TO SCALE



TH-C Second Floor Plan
NOT TO SCALE



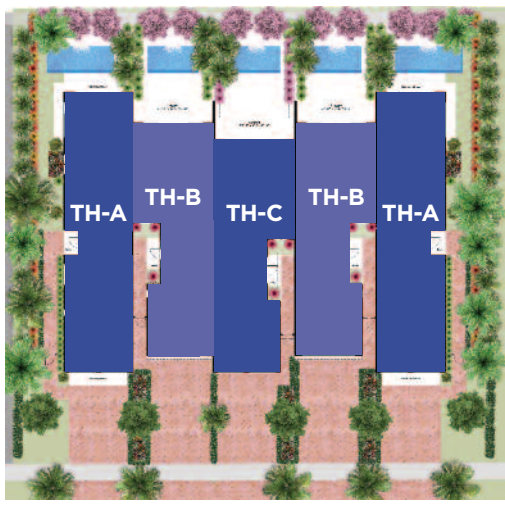
TH-C Third Floor Plan
NOT TO SCALE

Floor Plans - Unit C

TH-C Building Area Calculations

| | |
|------------------|----------------------|
| Ground Floor A/C | 1,032 sq. ft. |
| Second Floor A/C | 1,507 sq. ft. |
| Third Floor A/C | 961 sq. ft. |
| Total A/C | 3,500 sq. ft. |

| | |
|----------------------------------|----------------------|
| Garage | 416 sq. ft. |
| Loggia | 158 sq. ft. |
| Balconies | 183 sq. ft. |
| Terrace | 231 sq. ft. |
| Total Building Floor Area | 4,488 sq. ft. |



For more information please call
PASCAL LIGUORI & ANTONIO LIGUORI
 BROKER ASSOCIATE
561.278.0100 **561.414.4849**
 Pascal@PremierEstateProperties.com Antonio@PremierEstateProperties.com

NEW CONSTRUCTION

104 ANDREWS AVENUE
 DELRAY BEACH, FLORIDA
 STARTING AT \$2.495 MILLION

- BEDROOMS 3 | BATHS 3.1
- UNIT 1A INFO: www.rx10335784.com
- UNIT 2B INFO: www.rx10335773.com
- UNIT 3C INFO: www.rx10335634.com
- UNIT 4B INFO: www.rx10335781.com
- UNIT 5A INFO: www.rx10335790.com

PascalLiguoriAndSon.com



DISCLAIMER: The written and verbal information provided including but not limited to prices, measurements, square footages, lot sizes, calculations and statistics have been obtained and conveyed from third parties such as the applicable Multiple Listing Service, public records as well as other sources. All prices are either list price, sold price, and/or last asking price. Premier Estate Properties has listed, sold or participated in the sale of these properties. The transactions representing both buyers and sellers are calculated twice. Premier Estate Properties' marketplace is all of the following: Vero Beach, Town of Orchid, Indian River Shores, Town of Palm Beach, West Palm Beach, Manalapan Beach, Point Manalapan, Hypoluxo Island, Ocean Ridge, Gulf Stream, Delray Beach, Highland Beach, Boca Raton, East Deerfield Beach, Hillsboro Beach, Hillsboro Shores, East Pompano Beach, Lighthouse Point, Sea Ranch Lakes and Fort Lauderdale. All written and verbal information including that produced by the Sellers or Premier Estate Properties are subject to errors, omissions or changes without notice and should be independently verified by any prospective purchaser of a Property. The Sellers and Premier Estate Properties Inc. expressly disclaim any warranty or representation regarding all information. Prospective Purchasers' use of any written and verbal information is acknowledgement of this disclaimer and that the prospective purchaser shall perform their own due diligence. In the event a Buyer defaults, no commission will be paid to either Broker on the Deposits retained by the Seller. "No Commissions Paid until Title Passes." Prospective purchasers shall not rely on this information when entering into a contract for sale and purchase. Some affiliations may not be applicable to certain geographic areas. If your property is currently listed, please do not consider this a solicitation. Copyright 2018 Premier Estate Properties Inc. All Rights Reserved. The name "Pascal Liguori & Son" is a registered fictitious name in Florida owned by Pascal Liguori, Inc., a Florida corporation.

SEAGLASS COTTAGES

Seaglass Cottages is a brand new enclave of five Island Contemporary Townhomes ideally located in the heart of Delray Beach...just one block from the ocean, and one block from Atlantic Avenue with its vibrant culture of boutiques, cafes and eateries.

Designed by renowned architect Richard Jones and crafted by Seaside Builders, these luxury two- and three-story townhomes share a modern visual theme with floor-to-ceiling glass and crisp, clean lines. All are centered around a sweeping great room with hardwood floors, fine finishings, and an upscale island kitchen with custom cabinetry and high-end appliances.

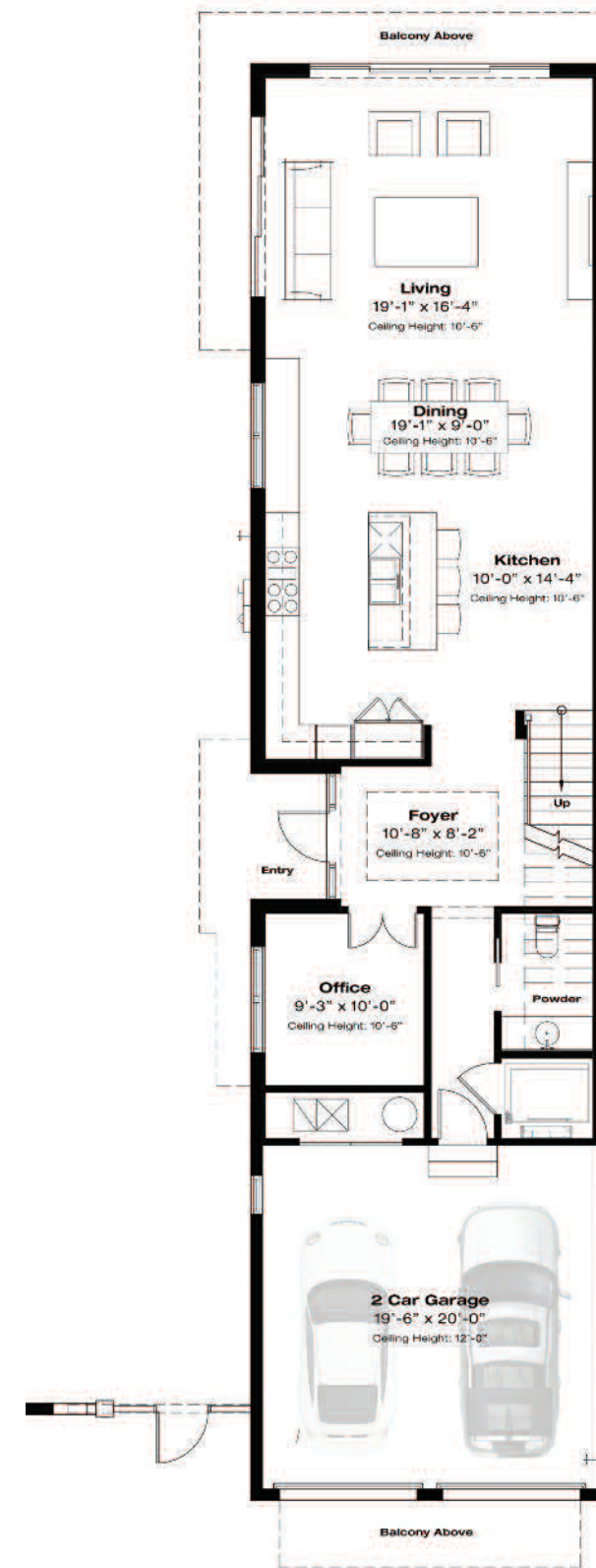
Each gracious residence offers 3 bedrooms, 3 full baths and 1 or 2 half baths, covered balconies and/or terraces, an office or clubroom, a utility area, 2-bay garage, and a rear loggia with a personal plunge pool surrounded by tropical landscaping in a truly private enclosure.

Two-story units total 3,702± square feet. Three-story units range from 4,488± to 4,981± total square feet. All offer the luxury of easy living, South-Florida style.

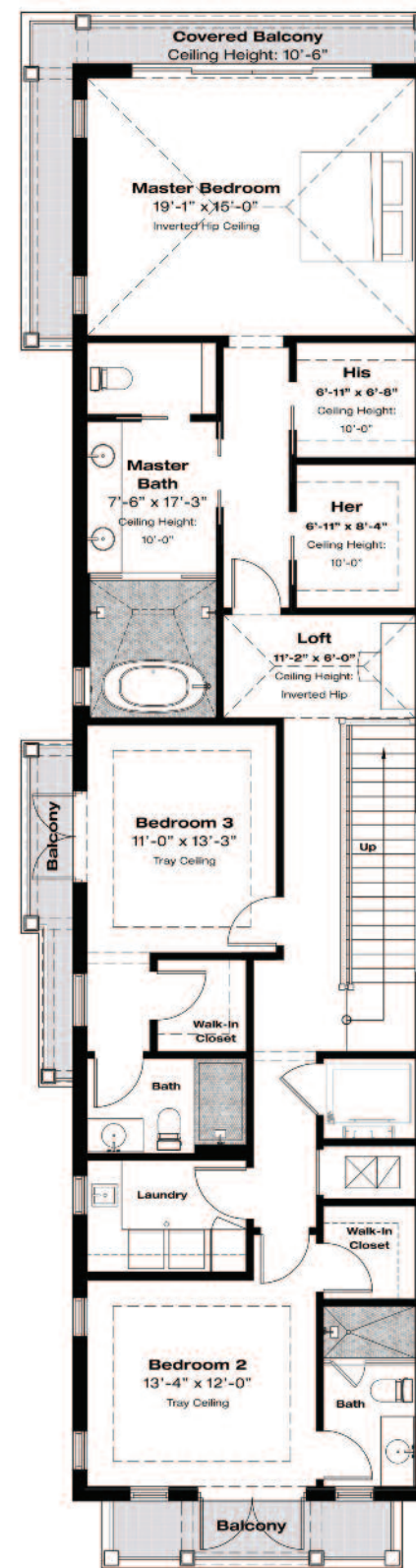


For more information please call
PASCAL LIGUORI & ANTONIO LIGUORI
 BROKER ASSOCIATE
561.278.0100
 Pascal@PremierEstateProperties.com

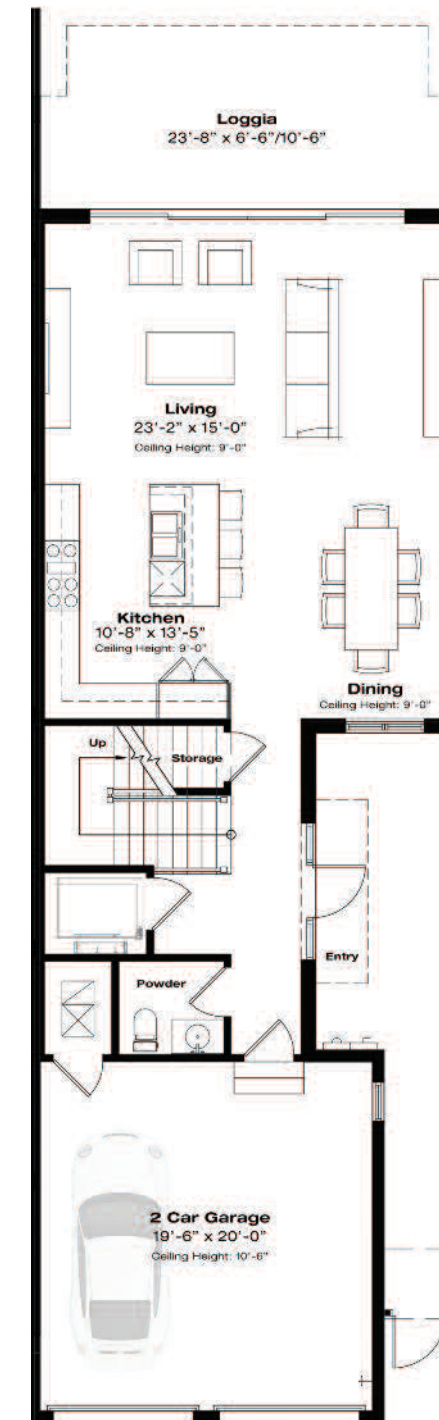
561.414.4849
 Antonio@PremierEstateProperties.com



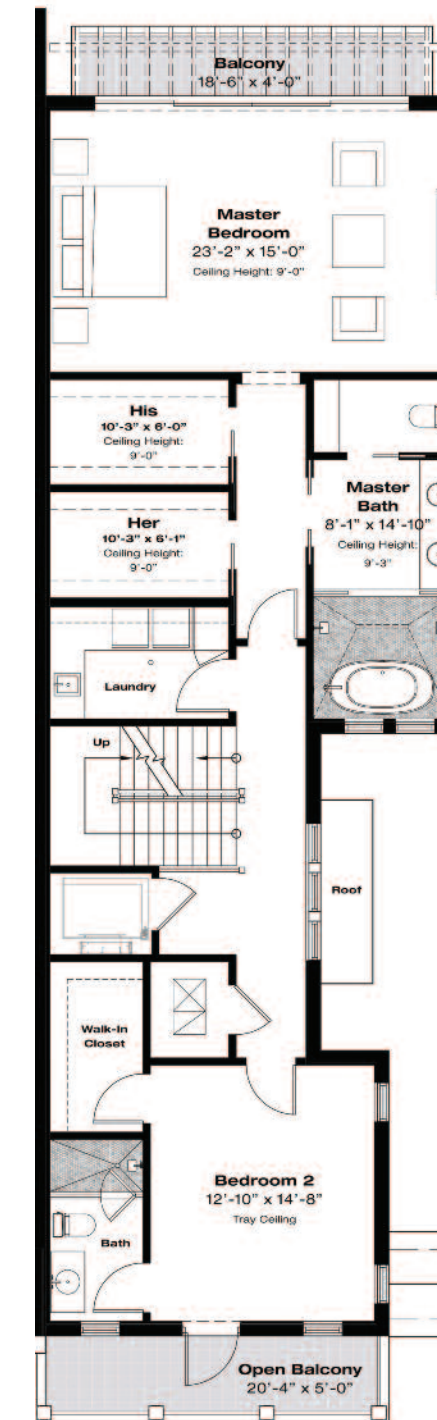
TH-A Ground Floor Plan
NOT TO SCALE



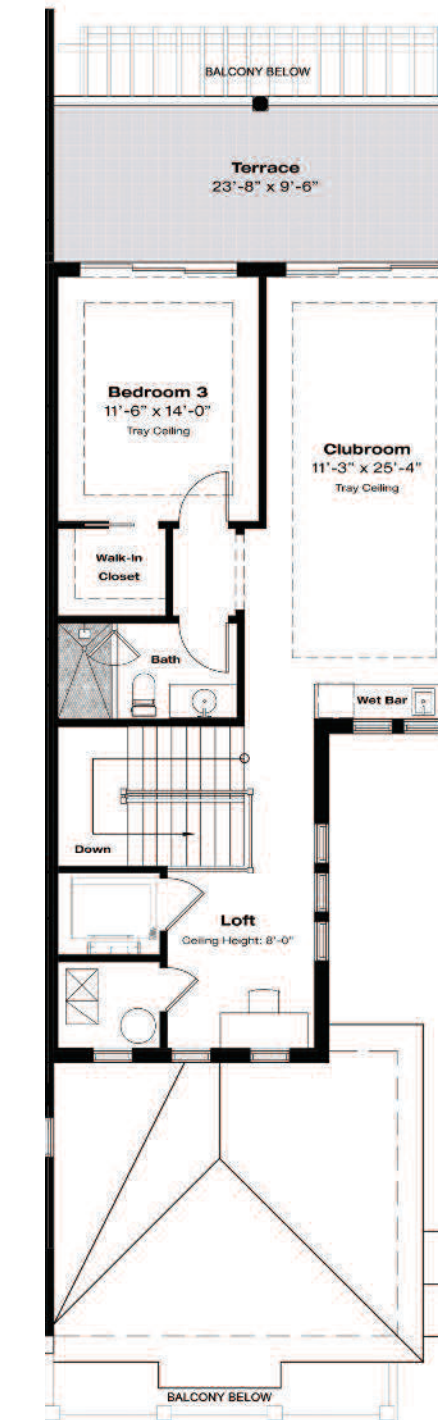
TH-A Second Floor Plan
NOT TO SCALE



TH-B Ground Floor Plan
NOT TO SCALE



TH-B Second Floor Plan
NOT TO SCALE



TH-B Third Floor Plan
NOT TO SCALE

Floor Plans - Unit A Typical

| TH-A Building Area Calculations | |
|----------------------------------|----------------------|
| Ground Floor A/C | 1,270 sq. ft. |
| Second Floor A/C | 1,730 sq. ft. |
| Total A/C | 3,000 sq. ft. |
| Garage | 430 sq. ft. |
| Entry | 32 sq. ft. |
| Balconies | 240 sq. ft. |
| Total Building Floor Area | 3,702 sq. ft. |

Floor Plans - Unit B Typical

| TH-B Building Area Calculations | |
|----------------------------------|----------------------|
| Ground Floor A/C | 1,032 sq. ft. |
| Second Floor A/C | 1,507 sq. ft. |
| Third Floor A/C | 1,166 sq. ft. |
| Total A/C | 3,705 sq. ft. |
| Garage | 416 sq. ft. |
| Loggia | 158 sq. ft. |
| Balconies | 362 sq. ft. |
| Terrace | 340 sq. ft. |
| Total Building Floor Area | 4,981 sq. ft. |

ONLY ONE REMAINS



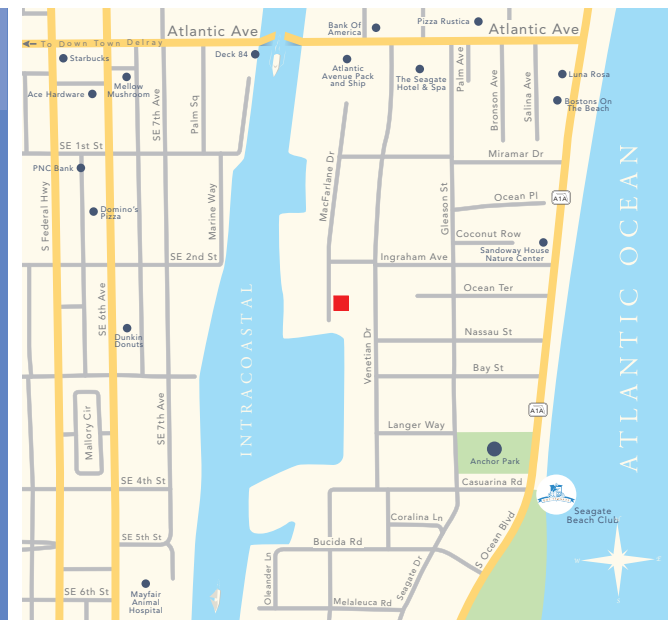
BEACH AREA TOWNHOMES

NEW CONSTRUCTION

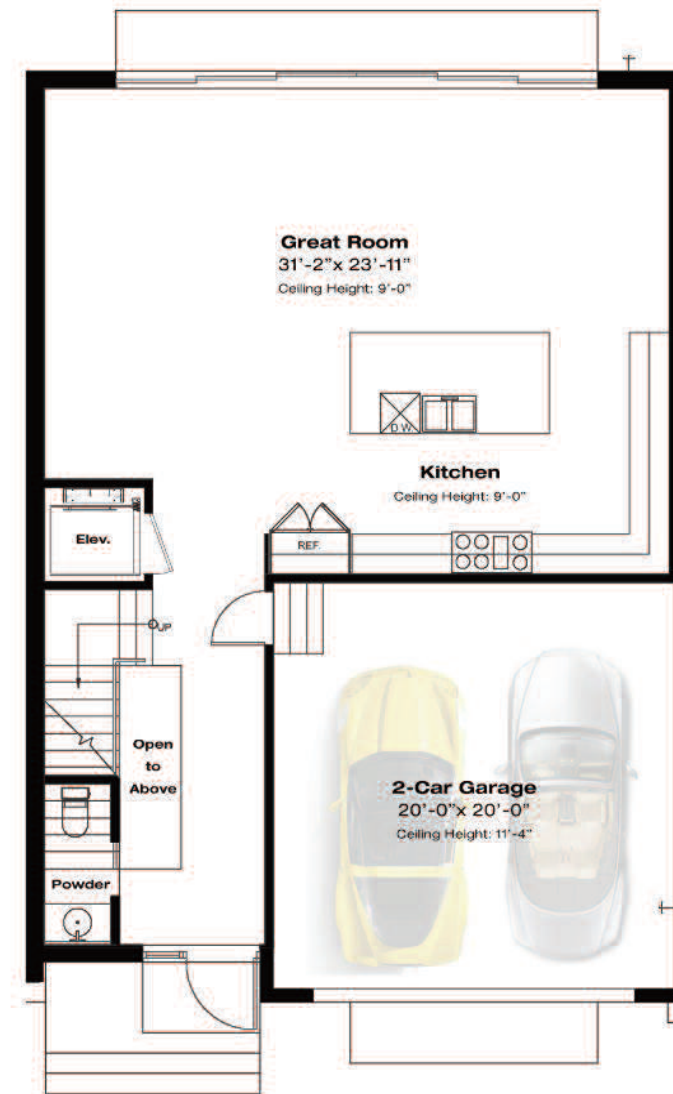
213 MACFARLANE DRIVE
DELRAY BEACH, FLORIDA
\$2.595 MILLION

BEDROOMS 3
BATHS 3.1
TOTAL SQ. FT. 4,373±
UNIT B INFO: www.rx10259206.com

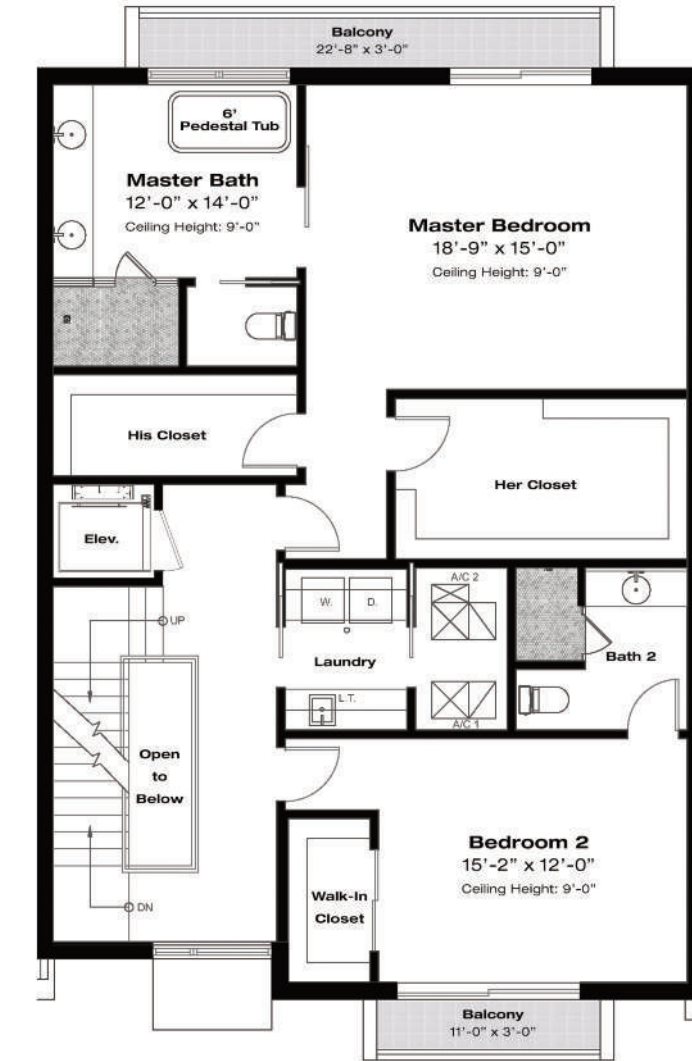
PascalLiguoriAndSon.com



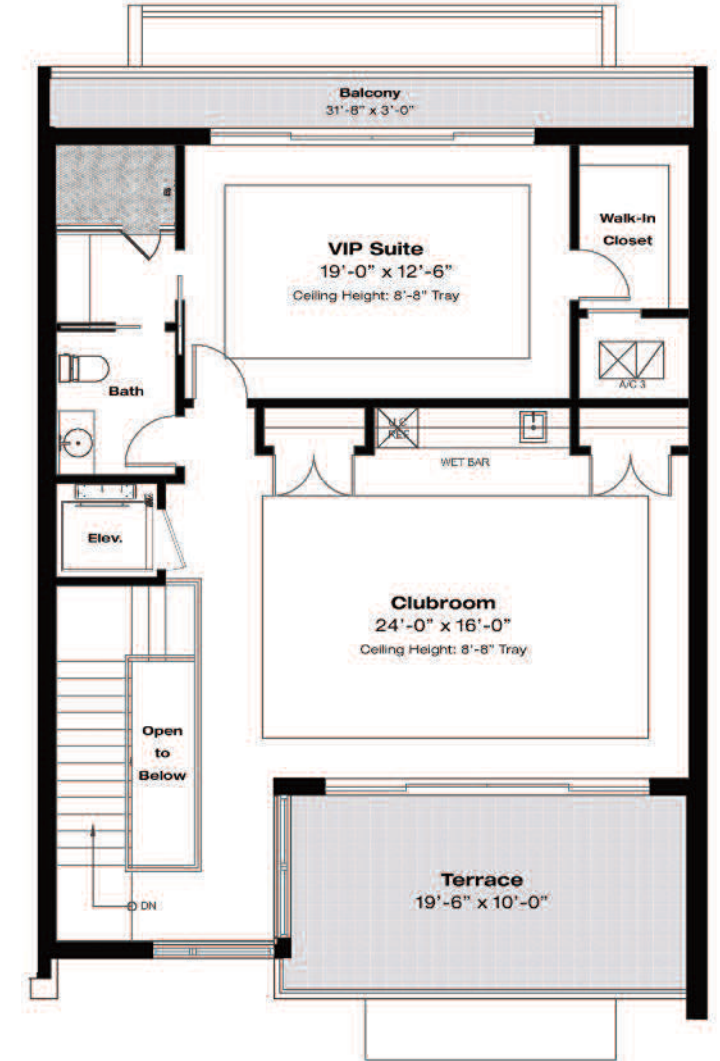
Ground Floor Plan
NOT TO SCALE



Second Floor Plan
NOT TO SCALE



Third Floor Plan
NOT TO SCALE



Floor Plans - Unit B

| Building Area Calculations | |
|----------------------------------|----------------------|
| Ground Floor A/C | 1,038 sq. ft. |
| Second Floor A/C | 1,404 sq. ft. |
| Third Floor A/C | 1,104 sq. ft. |
| Total A/C | 3,546 sq. ft. |
| Garage | 421 sq. ft. |
| Balconies | 203 sq. ft. |
| Terrace | 203 sq. ft. |
| Total Building Floor Area | 4,373 sq. ft. |



For more information please call

PASCAL LIGUORI & ANTONIO LIGUORI
BROKER ASSOCIATE & BROKER ASSOCIATE
561.278.0100 561.414.4849
Pascal@PremierEstateProperties.com Antonio@PremierEstateProperties.com

DISCLAIMER: The written and verbal information provided including but not limited to prices, measurements, square footages, lot sizes, calculations and statistics have been obtained and conveyed from third parties such as the applicable Multiple Listing Service, public records as well as other sources. All prices are either list price, sold price, and/or last asking price. Premier Estate Properties has listed, sold or participated in the sale of these properties. The transactions representing both buyers and sellers are calculated twice. Premier Estate Properties' marketplace is all of the following: Vero Beach, Town of Orchid, Indian River Shores, Town of Palm Beach, West Palm Beach, Manalapan Beach, Point Manalapan, Hypoluxo Island, Ocean Ridge, Gulf Stream, Delray Beach, Highland Beach, Boca Raton, East Deerfield Beach, Hillsboro Beach, Hillsboro Shores, East Pompano Beach, Lighthouse Point, Sea Ranch Lakes and Fort Lauderdale. All written and verbal information including that produced by the Sellers or Premier Estate Properties are subject to errors, omissions or changes without notice and should be independently verified by any prospective purchaser of a Property. The Sellers and Premier Estate Properties Inc. expressly disclaim any warranty or representation regarding all information. Prospective Purchasers' use of any written and verbal information is acknowledgment of this disclaimer and that the prospective purchaser shall perform their own due diligence. In the event a Buyer defaults, no commission will be paid to either Broker on the Deposits retained by the Seller. "No Commissions Paid until Title Passes." Prospective purchasers shall not rely on this information when entering into a contract for sale and purchase. Some affiliations may not be applicable to certain geographic areas. If your property is currently listed, please do not consider this a solicitation. Copyright 2018 Premier Estate Properties Inc. All Rights Reserved. The name "Pascal Liguori & Son" is a registered fictitious name in Florida owned by Pascal Liguori, Inc., a Florida corporation.

NAUTICA DIRECT INTRACOASTAL

On a wide stretch of the Intracoastal in the sought-after Seagate beachside community, acclaimed luxury firm Seaside Builders presents "Nautica", a stunning new enclave now being created, with just four contemporary townhomes designed by innovative architect Richard Jones with an artfully striking look and an effortless practicality. Floor-to-ceiling window walls, clean-lined forms, and curated finishes compose each residence with a comfortable three-level living environment, served by a private elevator, giving relaxed coastal style a sophisticated modern flair.

Filled with gorgeous Intracoastal views, Residence D totals 5,542± square feet in a spacious floor-plan with four bedrooms and four and a-half baths. Opening by the waterfront infinity pool, the ground floor hosts a club room with wet bar, a den/bedroom, and full bath. The second floor's large waterside great room is open to the high-end chef's kitchen. A powder room and bedroom suite are also on this level. On the third floor, two more bedroom suites feature luxe master quarters comprised of a spacious waterside bedroom, spa-like bath, and double wardrobe room.

Residences A and B both offer three bedrooms and three and a-half baths in comfortable floor-plans totaling 4,102± and 4,390± square feet, respectively. Each first floor provides a large open-concept great room with high-end chef's kitchen, plus a powder room. The second floor's two bedroom suites feature a luxurious master retreat with spa-style bath and double wardrobe room, while the third floor hosts another bedroom and bath next to the club room. Scheduled for completion in the Spring of 2019, the Nautica residences will make their mark as an extraordinary Delray Beach address.



For more information please call

PASCAL LIGUORI

BROKER ASSOCIATE

561.278.0100

Pascal@PremierEstateProperties.com

ANTONIO LIGUORI

BROKER ASSOCIATE

561.414.4849

Antonio@PremierEstateProperties.com

DISCLAIMER: The written and verbal information provided including but not limited to prices, measurements, square footages, lot sizes, calculations and statistics have been obtained and conveyed from third parties such as the applicable Multiple Listing Service, public records as well as other sources. All prices are either list price, sold price, and/or last asking price. Premier Estate Properties has listed, sold or participated in the sale of these properties. The transactions representing both buyers and sellers are calculated twice. Premier Estate Properties' marketplace is all of the following: Vero Beach, Town of Orchid, Indian River Shores, Town of Palm Beach, West Palm Beach, Manalapan Beach, Point Manalapan, Hypoluxo Island, Ocean Ridge, Gulf Stream, Delray Beach, Highland Beach, Hillsboro Beach, Lighthouse Point, Sea Ranch Lakes and Fort Lauderdale. All written and verbal information including that produced by the Sellers or Premier Estate Properties are subject to errors, omissions or changes without notice and should be independently verified by any prospective purchaser of a Property. The Sellers and Premier Estate Properties Inc. expressly disclaim any warranty or representation regarding all information. Prospective Purchasers' use of any written and verbal information is acknowledgement of this disclaimer and that the prospective purchaser shall perform their own due diligence. In the event a Buyer defaults, no commission will be paid to either Broker on the Deposits retained by the Seller. "No Commissions Paid until Title Passes." Prospective purchasers shall not rely on this information when entering into a contract for sale and purchase. Some affiliations may not be applicable to certain geographic areas. If your property is currently listed, please do not consider this a solicitation. Copyright 2018 Premier Estate Properties Inc. All Rights Reserved. The name "Pascal Liguori & Son" is a registered fictitious name in Florida owned by Pascal Liguori, Inc., a Florida corporation.

Floor Plans - Unit A \$2.895 MILLION

3 Bedrooms 3.1 Baths

Building Area Calculations

| | |
|---------------------------|---------------|
| Ground Floor A/C | 916 sq. ft. |
| Second Floor A/C | 1,362 sq. ft. |
| Third Floor A/C | 728 sq. ft. |
| Total Living A/C | 3,006 sq. ft. |
| Garage | 410 sq. ft. |
| Entry | 77 sq. ft. |
| Balconies | 277 sq. ft. |
| Terrace | 332 sq. ft. |
| Total Building Floor Area | 4,102 sq. ft. |

Floor Plans - Unit B \$2.895 MILLION

3 Bedrooms 3.1 Baths

Building Area Calculations

| | |
|---------------------------|---------------|
| Ground Floor A/C | 916 sq. ft. |
| Second Floor A/C | 1,362 sq. ft. |
| Third Floor A/C | 1,060 sq. ft. |
| Total Living A/C | 3,338 sq. ft. |
| Garage | 410 sq. ft. |
| Entry | 77 sq. ft. |
| Balconies | 305 sq. ft. |
| Terrace | 260 sq. ft. |
| Total Building Floor Area | 4,390 sq. ft. |

Floor Plans - Unit C **SOLD**

Building Area Calculations

| | |
|---------------------------|---------------|
| Ground Floor A/C | 1,076 sq. ft. |
| Second Floor A/C | 1,462 sq. ft. |
| Third Floor A/C | 1,340 sq. ft. |
| Appurtenance A/C | 170 sq. ft. |
| Total Living A/C | 4,048 sq. ft. |
| Garage | 409 sq. ft. |
| Balconies | 578 sq. ft. |
| Rooftop Terrace | 710 sq. ft. |
| Total Building Floor Area | 5,745 sq. ft. |

Floor Plans - Unit D \$4.295 MILLION

4 Bedrooms 4.1 Baths

Building Area Calculations

| | |
|---------------------------|---------------|
| Ground Floor A/C | 1,034 sq. ft. |
| Second Floor A/C | 1,462 sq. ft. |
| Third Floor A/C | 1,208 sq. ft. |
| Appurtenance A/C | 170 sq. ft. |
| Total Living A/C | 3,874 sq. ft. |
| Garage | 408 sq. ft. |
| Balconies | 550 sq. ft. |
| Rooftop Terrace | 710 sq. ft. |
| Total Building Floor Area | 5,542 sq. ft. |



NAUTICA DIRECT INTRACOASTAL

NEW CONSTRUCTION

917 BUCIDA ROAD
DELRAY BEACH, FLORIDA
STARTING AT \$2.895 MILLION

UNIT A INFO: www.rx10435181.com

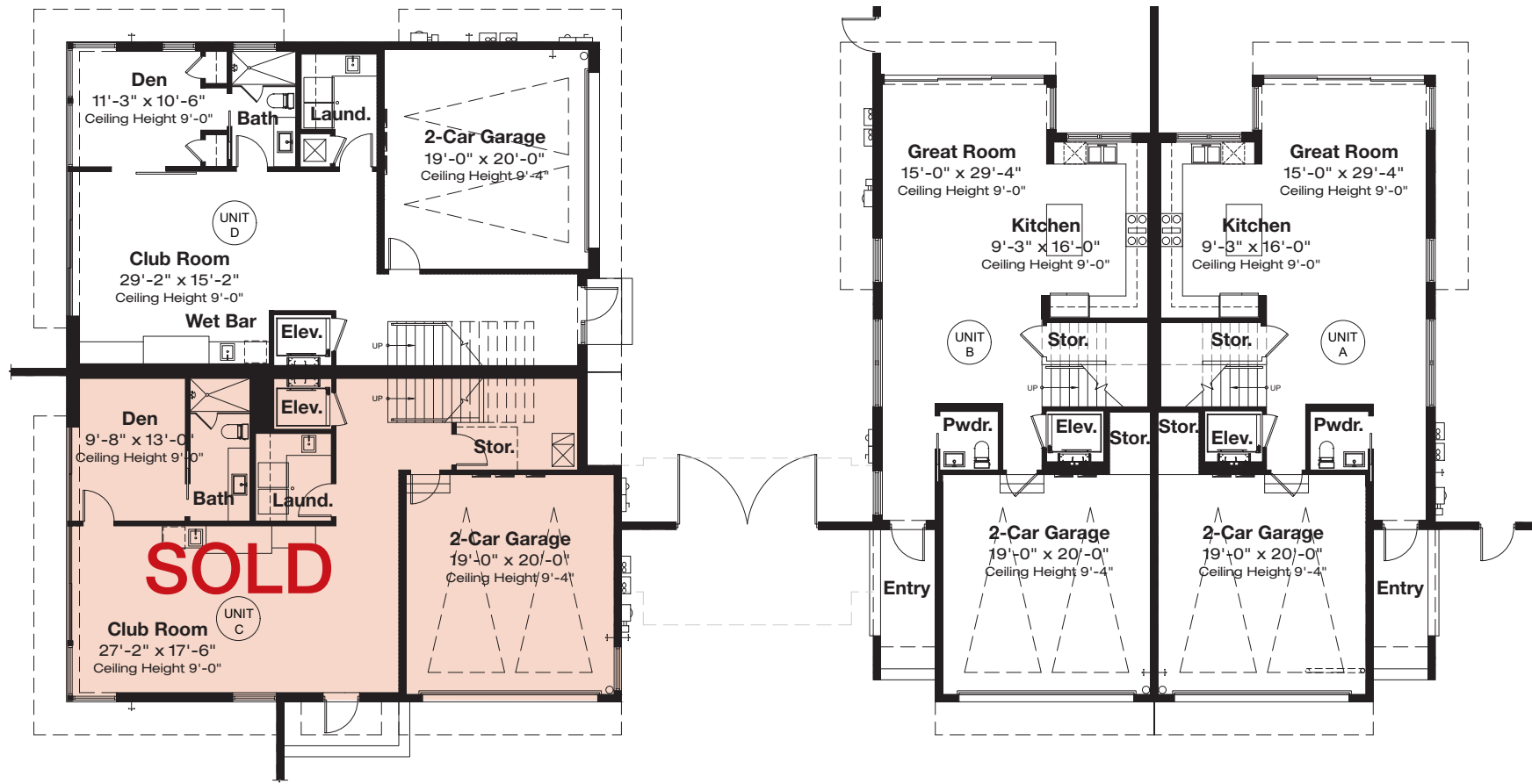
UNIT B INFO: www.rx10435184.com

UNIT D INFO: www.rx10435193.com

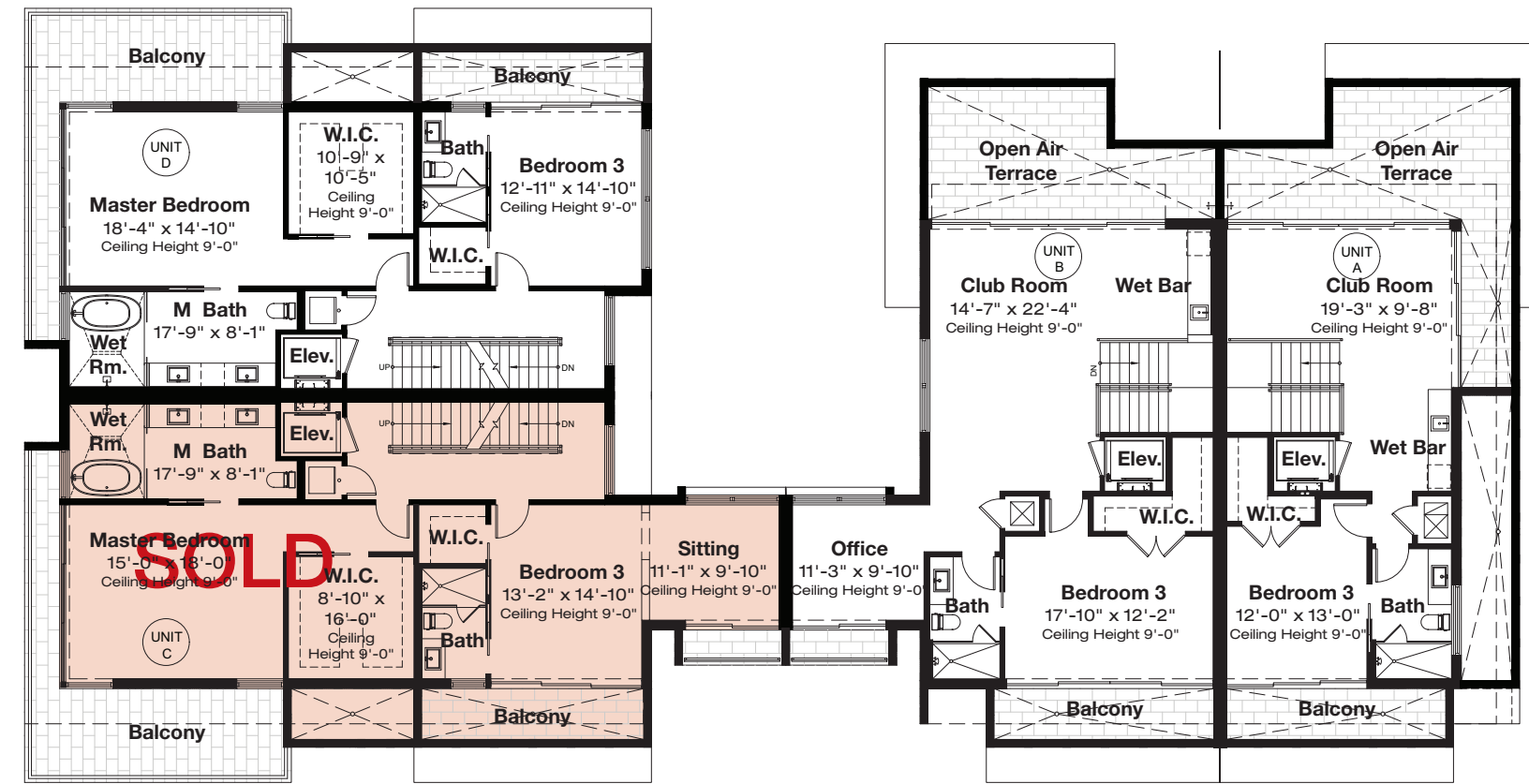
PascalLiguoriAndSon.com



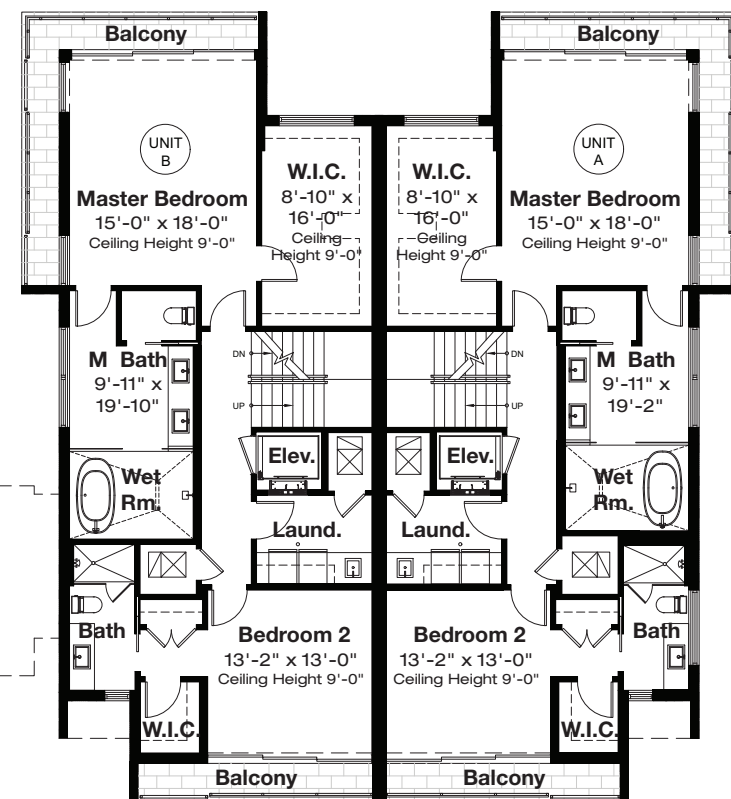
NAUTICA | DIRECT INTRACOASTAL



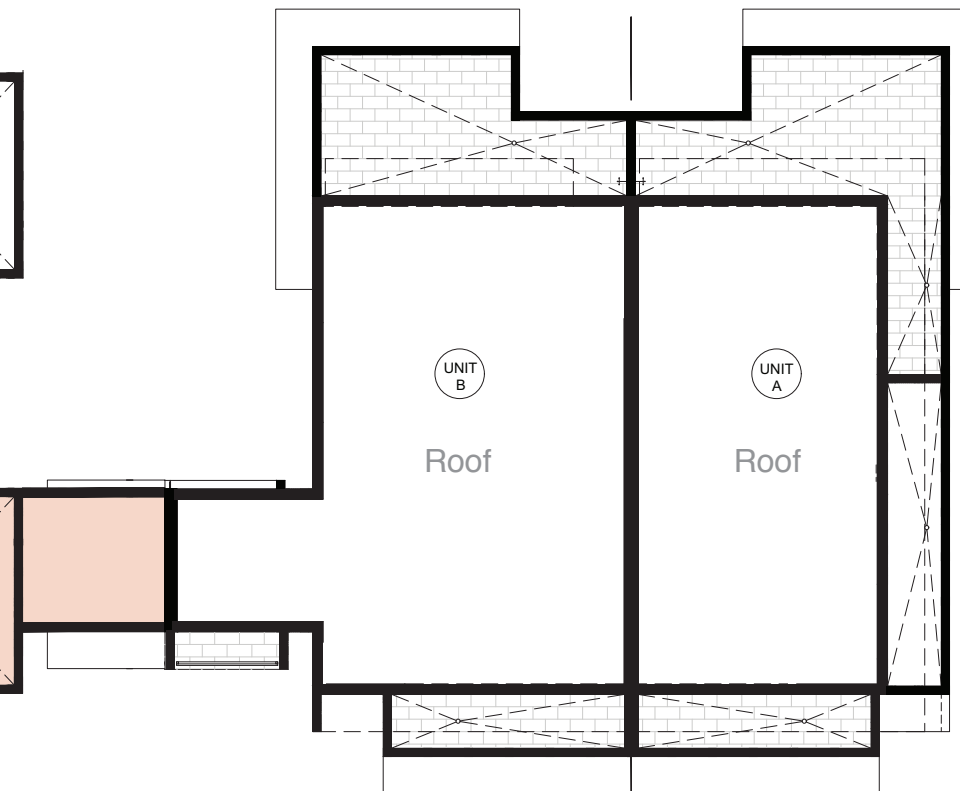
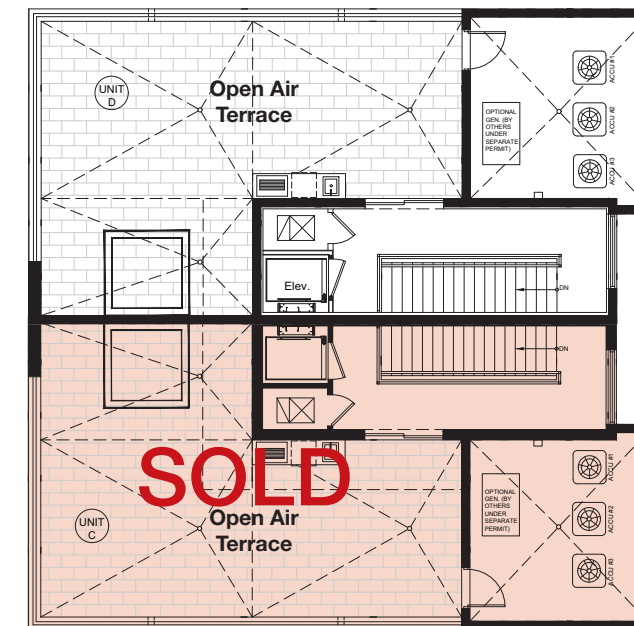
Ground Floor Plan
NOT TO SCALE



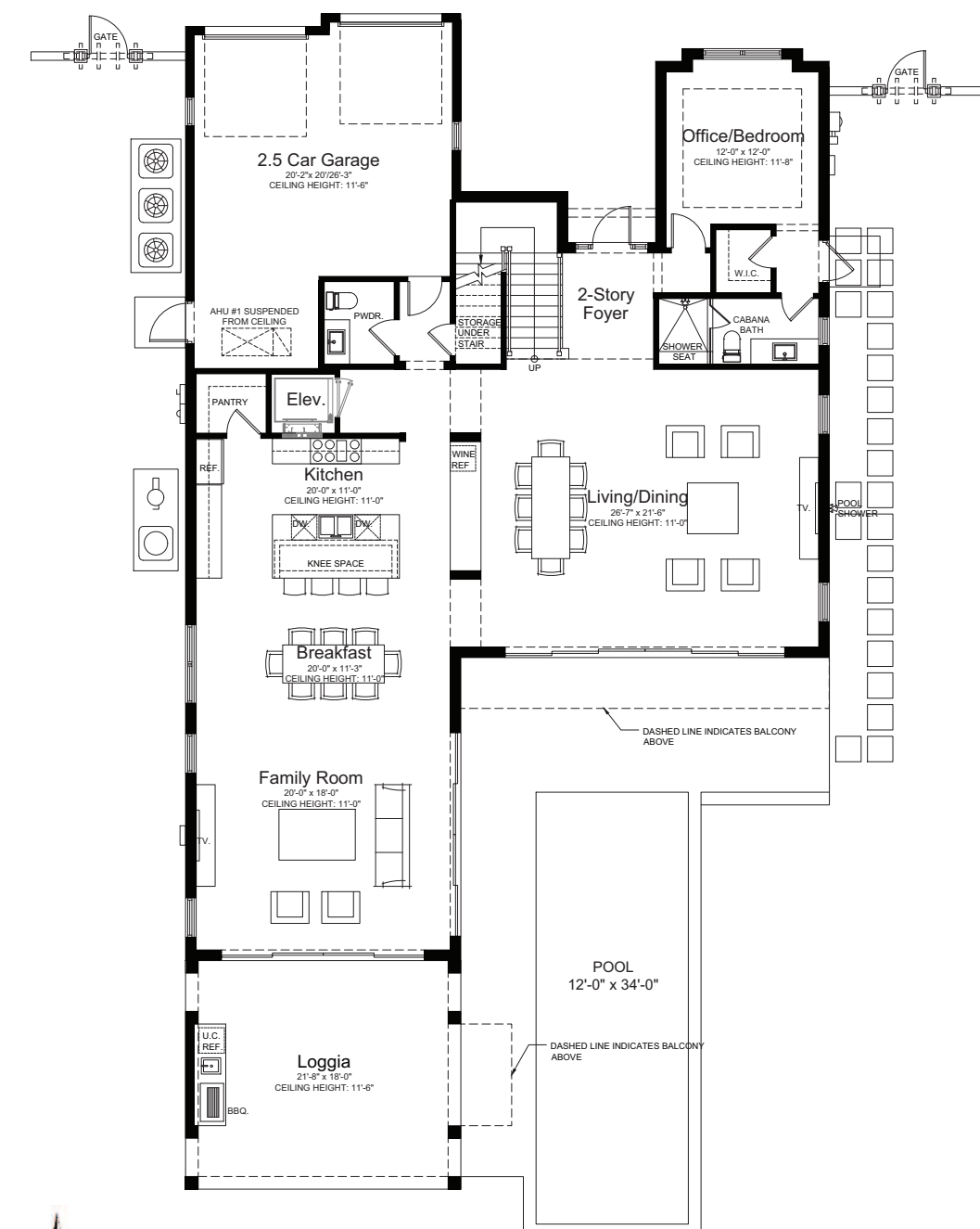
Third Floor Plan
NOT TO SCALE



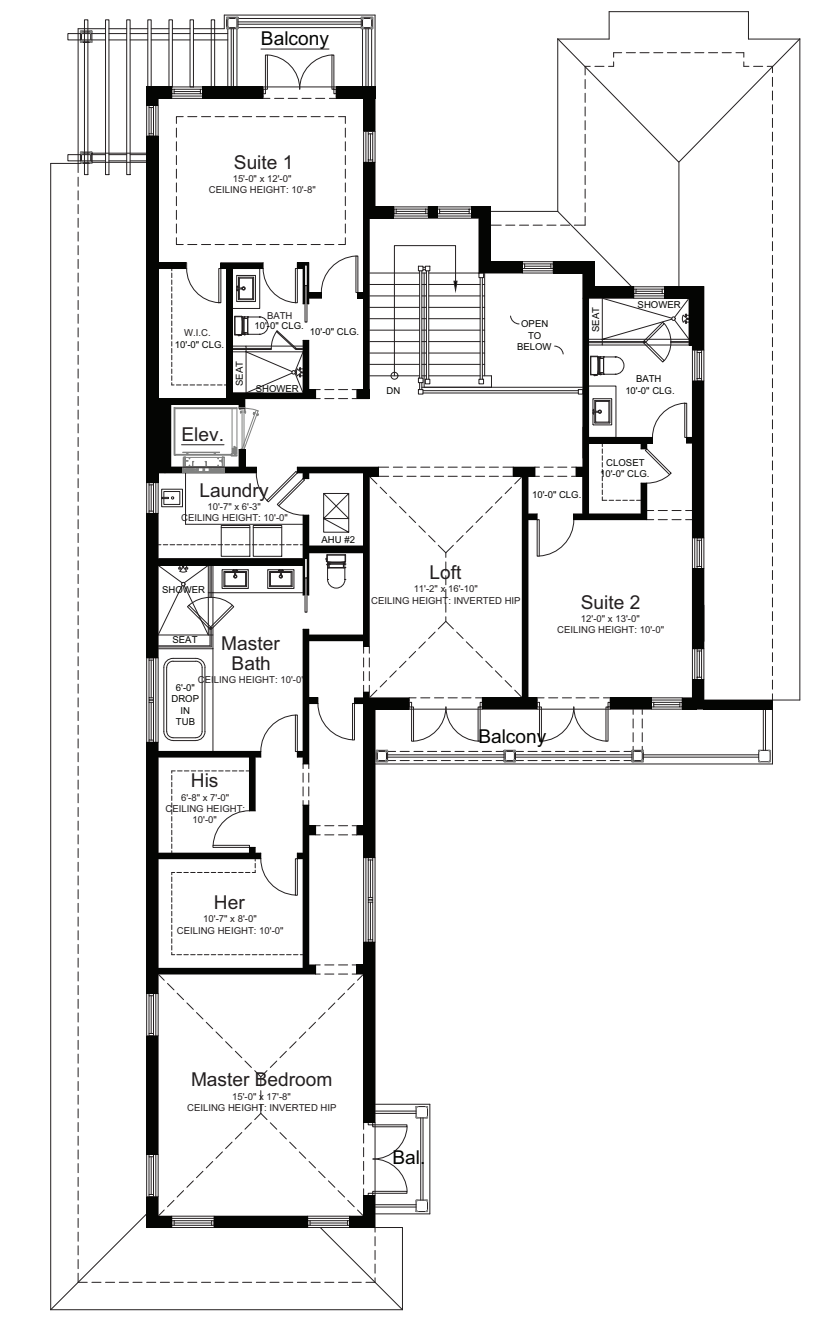
Second Floor Plan
NOT TO SCALE



Unit C & D Rooftop Terrace
NOT TO SCALE



Ground Floor Plan
NOT TO SCALE



Second Floor Plan
NOT TO SCALE

NEW ISLAND-INSPIRED ESTATE

NEW CONSTRUCTION

1210 SEASPRAY AVENUE
DELRAY BEACH, FLORIDA
\$4.25 MILLION

BEDROOMS 4
BATHS 4.1
TOTAL SQ. FT. 5,565±
INFO: www.rx10324435.com

PascalLiguoriAndSon.com



The award-winning team of renowned developer, Seaside Builders, and distinguished architect, Richard Jones, has collaborated in creating a new Island-Inspired Estate that is completely in harmony with the laid back luxury lifestyle of its exclusive Delray Beach setting.

Located just 600 feet from the ocean and blocks from the charm, the energy of Atlantic Avenue, with its many boutiques, cafes and eateries...this two-story masterpiece of design and quality construction juxtaposes versatile, fluid space with personal privacy.

The airy, L-shaped open concept lower level is defined by clean lines, wall-to ceiling impact glass, superb finishings, high-end cabinetry and top-of-the-line appliances...while the three bedroom suites upstairs are punctuated by spacious walk-in closets, personal baths and private balconies.

The sea-and-sand color palette softly complements the gracious covered loggia, private pool and pristine garden to create the ideal setting for relaxing or entertaining at this Island-inspired new estate in the heart of Delray Beach.

Floor Plans

| Building Area Calculations | |
|----------------------------------|----------------------|
| Ground Floor A/C | 2,280 sq. ft. |
| Second Floor A/C | 2,108 sq. ft. |
| Total A/C | 4,388 sq. ft. |
| Garage | 508 sq. ft. |
| Loggia | 390 sq. ft. |
| Balconies | 279 sq. ft. |
| Total Building Floor Area | 5,565 sq. ft. |

For more information please call

Premier Estate Properties
Presenting Properties Exclusively In Excess Of One Million Dollars™

PASCAL LIGUORI
BROKER ASSOCIATE
561.278.0100
Pascal@PremierEstateProperties.com

ANTONIO LIGUORI
BROKER ASSOCIATE
561.414.4849
Antonio@PremierEstateProperties.com

DISCLAIMER: The written and verbal information provided including but not limited to prices, measurements, square footages, lot sizes, calculations and statistics have been obtained and conveyed from third parties such as the applicable Multiple Listing Service, public records as well as other sources. All prices are either list price, sold price, and/or last asking price. Premier Estate Properties has listed, sold or participated in the sale of these properties. The transactions representing both buyers and sellers are calculated twice. Premier Estate Properties' marketplace is all of the following: Vero Beach, Town of Orchid, Indian River Shores, Town of Palm Beach, West Palm Beach, Manalapan Beach, Point Manalapan, Hypoluxo Island, Ocean Ridge, Gull Stream, Delray Beach, Highland Beach, Boca Raton, East Deerfield Beach, Hillsboro Beach, Hillsboro Beach, East Pompano Beach, Lighthouse Point, Sea Ranch Lakes and Fort Lauderdale. All written and verbal information including that produced by the Sellers or Premier Estate Properties are subject to errors, omissions or changes without notice and should be independently verified by any prospective purchaser of a Property. The Sellers and Premier Estate Properties Inc. expressly disclaim any warranty or representation regarding all information. Prospective Purchasers' use of any written and verbal information is acknowledgement of this disclaimer and that the prospective purchaser shall perform their own due diligence. In the event a Buyer defaults, no commission will be paid to either Broker on the Deposits retained by the Seller. "No Commissions Paid until Title Passes." Prospective purchasers shall not rely on this information when entering into a contract for sale and purchase. Some affiliations may not be applicable to certain geographic areas. If your property is currently listed, please do not consider this a solicitation. Copyright 2018 Premier Estate Properties Inc. All Rights Reserved. The name "Pascal Liguori & Son" is a registered fictitious name in Florida owned by Pascal Liguori, Inc., a Florida corporation.



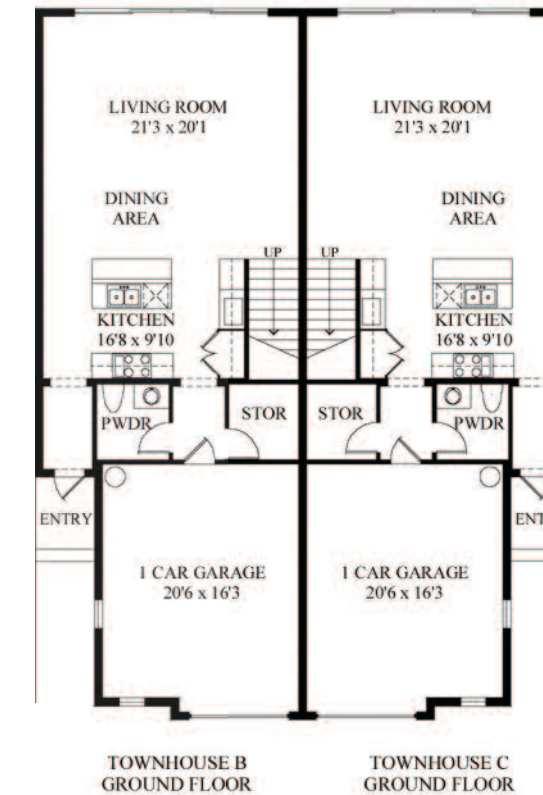
CONTEMPORARY TOWNHOMES

NEW CONSTRUCTION

101 & 105 SE 7TH AVENUE
 DELRAY BEACH, FLORIDA
 \$1.595 MILLION EACH

BEDROOMS 3 | BATHS 4.1
 TOTAL SQ. FT. 3,426±
 UNIT 101 INFO: www.rx10325362.com
 UNIT 105 INFO: www.rx10325365.com

PascalliguoriAndSon.com

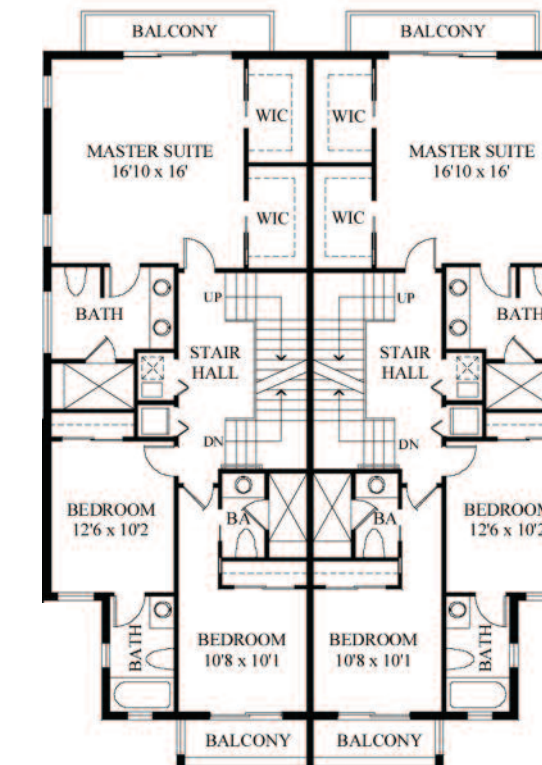


TOWNHOUSE B
GROUND FLOOR

TOWNHOUSE C
GROUND FLOOR



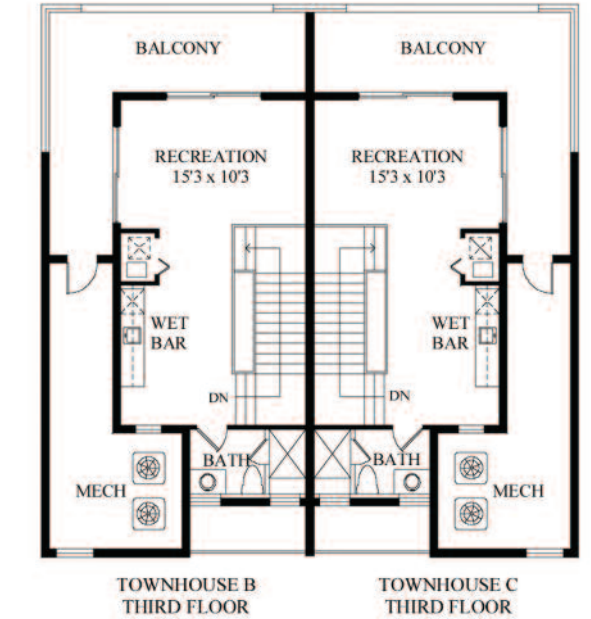
Ground Floor Plan
 NOT TO SCALE



TOWNHOUSE B
SECOND FLOOR

TOWNHOUSE C
SECOND FLOOR

Second Floor Plan
 NOT TO SCALE



TOWNHOUSE B
THIRD FLOOR

TOWNHOUSE C
THIRD FLOOR

Third Floor Plan
 NOT TO SCALE

Just completed in 2018, these two exquisite contemporary townhomes were created by Seaside Builders, a well-respected Delray Beach firm, in collaboration with innovative architect Richard Jones. Crisp clean lines, airy spans of glass, and an open floor-plan are signature elements of the South Florida modern design set off by fine finishes that complement the inviting coastal feel. In the beautifully landscaped setting, each residence opens to its own tranquil outdoor retreat featuring a private plunge pool surrounded by a walled garden terrace.

Each effortlessly designed floor-plan has three bedrooms, three and a-half baths, and an attached garage in the total of 3,426± square feet. European oak floors ground the freshly refined living environment which also features a glass-framed loft-inspired staircase, sleek custom-crafted cabinetry, and impact-resistant PGT WinGuard windows and exterior doors.

Bringing the outdoors in, the capacious great room opens to the pool terrace from this versatile living/dining space which is combined with the chef's kitchen, done in soft tone-on-tone hues, featuring quartz counters, Jenn-Air appliances, and a waterfall-edge island/bar. On the second floor, the luxe master suite opens to a treetop balcony facing the Intracoastal Waterway, and features two customized walk-in closets plus a spa-like bath with glassed shower. The other wing contains two bedroom suites, one with a sunset balcony. Opening to a wraparound balcony facing the Intracoastal, the third-floor's recreation room is perfect for private relaxation or entertaining, complete with a wet bar and full bath.

Floor Plans - Unit B & C

Building Area Calculations

| | |
|----------------------------------|----------------------|
| Ground Floor A/C | 851 sq. ft. |
| Second Floor A/C | 1,194 sq. ft. |
| Third Floor A/C | 442 sq. ft. |
| Total Living A/C | 2,487 sq. ft. |
| Single Bay Garage | 359 sq. ft. |
| Entry | 35 sq. ft. |
| Front Balcony | 42 sq. ft. |
| Rear Balcony | 48 sq. ft. |
| Roof Terrace | 237 sq. ft. |
| Equipment Area | 218 sq. ft. |
| Total Building Floor Area | 3,426 sq. ft. |

For more information please call

PASCAL LIGUORI & ANTONIO LIGUORI
 BROKER ASSOCIATE

561.278.0100

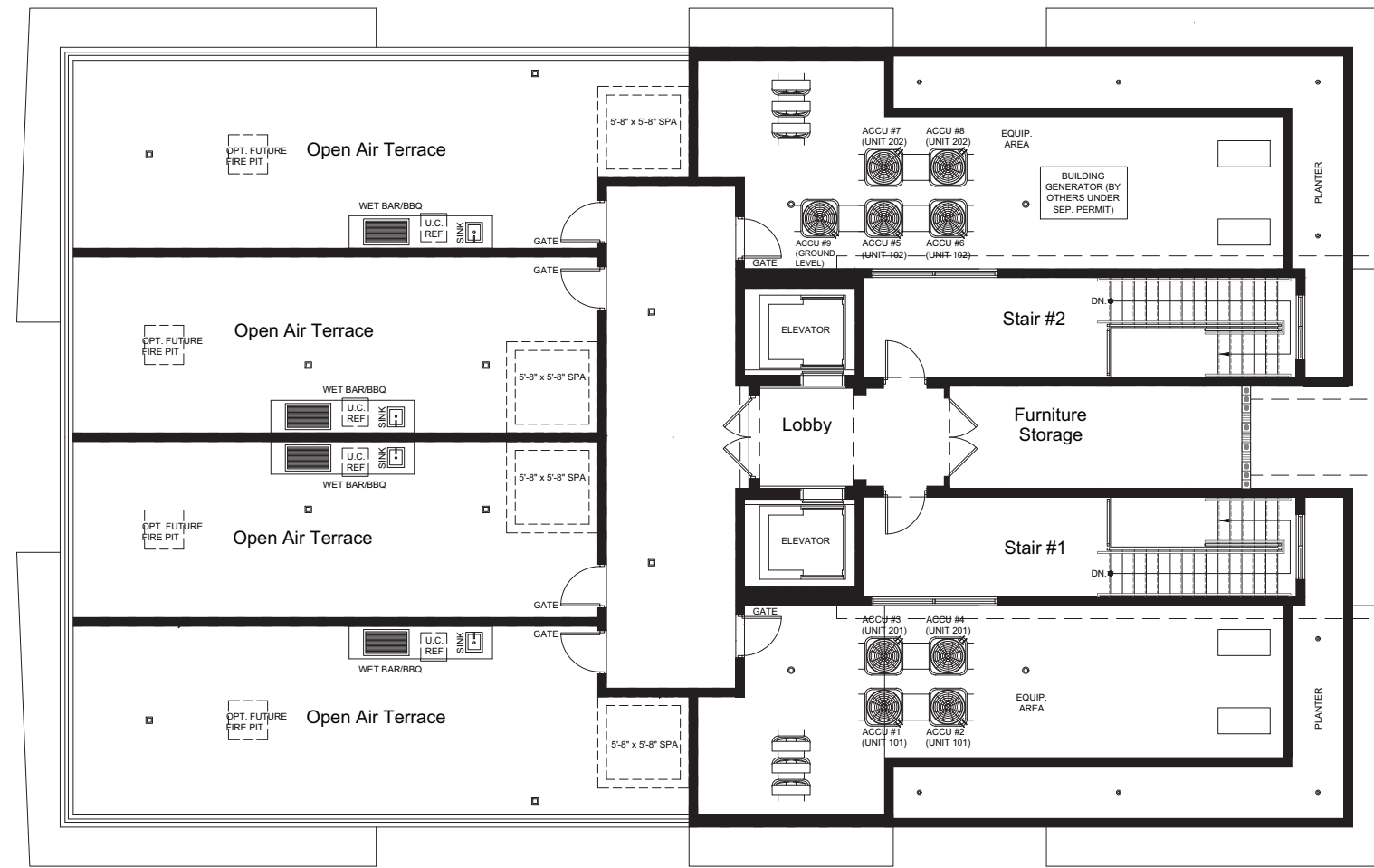
Pascal@PremierEstateProperties.com

561.414.4849

Antonio@PremierEstateProperties.com

DISCLAIMER: The written and verbal information provided including but not limited to prices, measurements, square footages, lot sizes, calculations and statistics have been obtained and conveyed from third parties such as the applicable Multiple Listing Service, public records as well as other sources. All prices are either list price, sold price, and /or last asking price. Premier Estate Properties has listed, sold or participated in the sale of these properties. The transactions representing both buyers and sellers are calculated twice. Premier Estate Properties' marketplace is all of the following: Vero Beach, Town of Orchid, Indian River Shores, Town of Palm Beach, Malabar Beach, Point Manalapan, Hypoluxo Island, Ocean Ridge, Gulf Stream, Delray Beach, Highland Beach, Boca Raton, East Deerfield Beach, Hillsboro Beach, Hillsboro Shores, East Pompano Beach, Lighthouse Point, Sea Ranch Lakes and Fort Lauderdale. All written and verbal information including that produced by the Sellers or Premier Estate Properties are subject to errors, omissions or changes without notice and should be independently verified by any prospective purchaser of a Property. The Sellers and Premier Estate Properties Inc. expressly disclaim any warranty or representation regarding all information. Prospective Purchasers' use of any written and verbal information is acknowledgement of this disclaimer and that the prospective purchaser shall perform their own due diligence. In the event a Buyer defaults, no commission will be paid to either Broker on the Deposits retained by the Seller. "No Commissions Paid until Title Passes." Prospective purchasers shall not rely on this information when entering into a contract for sale and purchase. Some affiliations may not be applicable to certain geographic areas. If your property is currently listed, please do not consider this a solicitation. Copyright 2018 Premier Estate Properties Inc. All Rights Reserved. The name "Pascal Liguori & Son" is a registered fictitious name in Florida owned by Pascal Liguori, Inc., a Florida corporation.

SINGLE LEVEL LIVING DIRECT INTRACOASTAL



Roof Terrace Plan
NOT TO SCALE



Effortless waterfront luxury awaits at Cove 4, the newest creation of acclaimed Seaside Builders, where wide cove-like Intracoastal waters provide the setting for just four single-level townhomes ideally located steps from the beach and a few blocks from exciting Atlantic Avenue. View-filled impact-glass window walls and artful flourishes are key elements of the striking modern design by leading-edge architect Richard Jones. The condominium's relaxing outdoor lounge space, pool, and on-site boat slips bring an exclusive resort experience, with each residence also enjoying its own private rooftop terrace with spa and summer kitchen.

Having private elevator access from the ground floor, which provides two garage spaces for every townhome, each light-filled floor-plan opens to balconies from all rooms of the spacious layout totaling 3,476± square feet with three bedrooms and three and a-half baths. Stylish comfort is the focus of the great room that combines the living/dining areas with the chef's kitchen, and opens to a wraparound waterfront balcony. Also opening to the balcony and waterfront view, the luxe master suite pairs two walk-in closets with a spa-like double bath featuring a pedestal tub, shower, and two separate water closets. Scheduled for completion in late 2019, Cove 4 is truly extraordinary.

Floor Plans - Unit

Building Area Calculations

| | |
|------------------------------|----------------------|
| Total Living A/C | 2,533 sq. ft. |
| Balconies | 400 sq. ft. |
| Upper Roof Terrace | 543 sq. ft. |
| Total Unit Floor Area | 3,476 sq. ft. |



For more information please call

PASCAL LIGUORI & ANTONIO LIGUORI
BROKER ASSOCIATE

561.278.0100

Pascal@PremierEstateProperties.com

561.414.4849

Antonio@PremierEstateProperties.com

DISCLAIMER: The written and verbal information provided including but not limited to prices, measurements, square footages, lot sizes, calculations and statistics have been obtained and conveyed from third parties such as the applicable Multiple Listing Service, public records as well as other sources. All prices are either list price, sold price, and/or last asking price. Premier Estate Properties has listed, sold or participated in the sale of these properties. The transactions representing both buyers and sellers are calculated twice. Premier Estate Properties' marketplace is all of the following: Vero Beach, Town of Orchid, Indian River Shores, Town of Palm Beach, West Palm Beach, Manalapan Beach, Point Manalapan, Hypoluxo Island, Ocean Ridge, Gulf Stream, Delray Beach, Hillside Beach, Hillsboro Beach, Boca Raton, East Deerfield Beach, Hillside Beach, Hillside Beach, Lighthouse Point, Sea Ranch Lakes and Fort Lauderdale. All written and verbal information including that produced by the Sellers or Premier Estate Properties are subject to errors, omissions or changes without notice and should be independently verified by any prospective purchaser of a Property. The Sellers and Premier Estate Properties Inc. expressly disclaim any warranty or representation regarding all information. Prospective Purchasers' use of any written and verbal information is acknowledgment of this disclaimer and that the prospective purchaser shall perform their own due diligence. In the event a Buyer defaults, no commission will be paid to either Broker on the Deposits retained by the Seller. "No Commissions Paid until Title Passes." Prospective purchasers shall not rely on this information when entering into a contract for sale and purchase. Some affiliations may not be applicable to certain geographic areas. If your property is currently listed, please do not consider this a solicitation. Copyright 2018 Premier Estate Properties Inc. All Rights Reserved. The name "Pascal Liguori & Son" is a registered fictitious name in Florida owned by Pascal Liguori, Inc., a Florida corporation.

COVE 4



NEW CONSTRUCTION

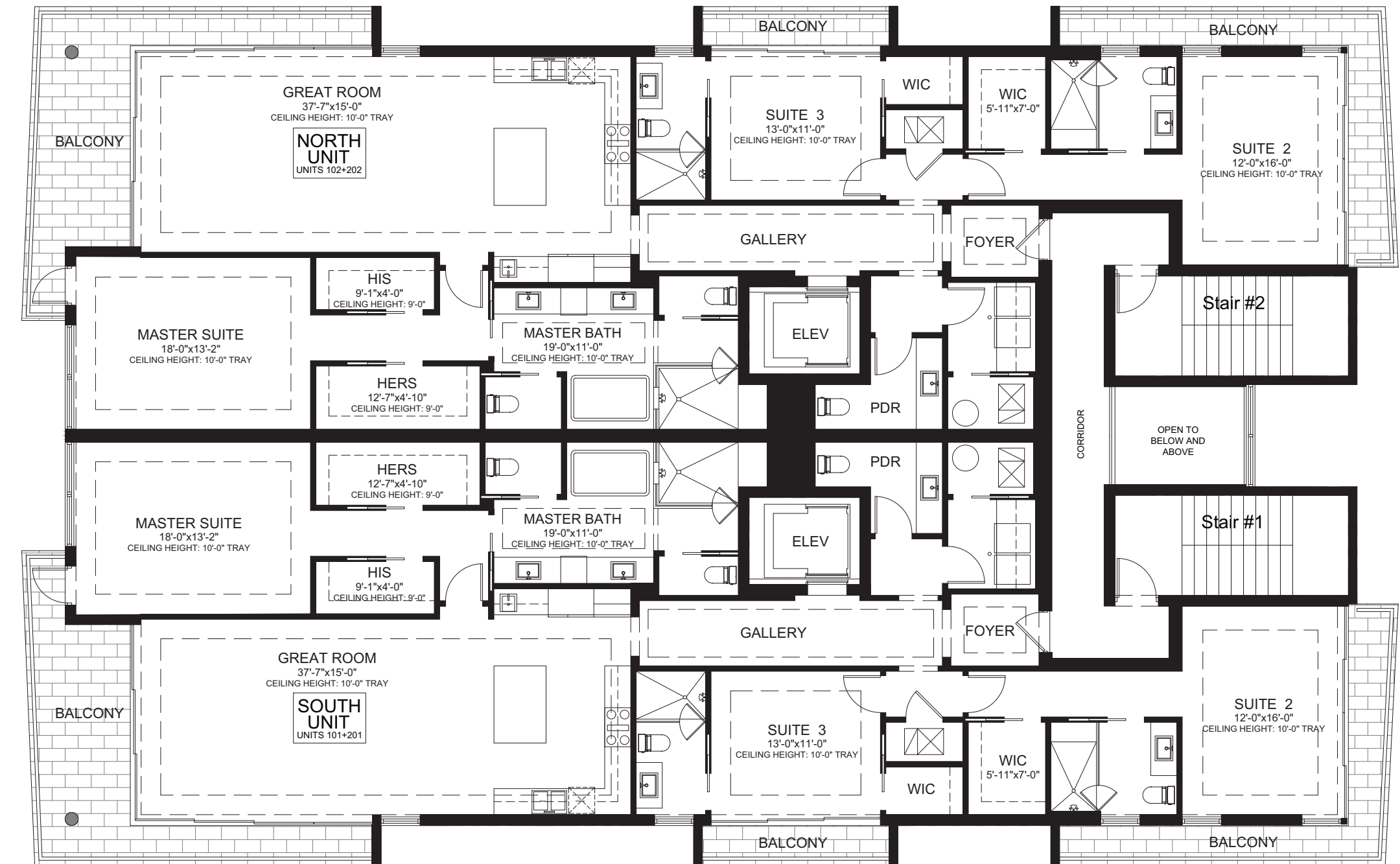
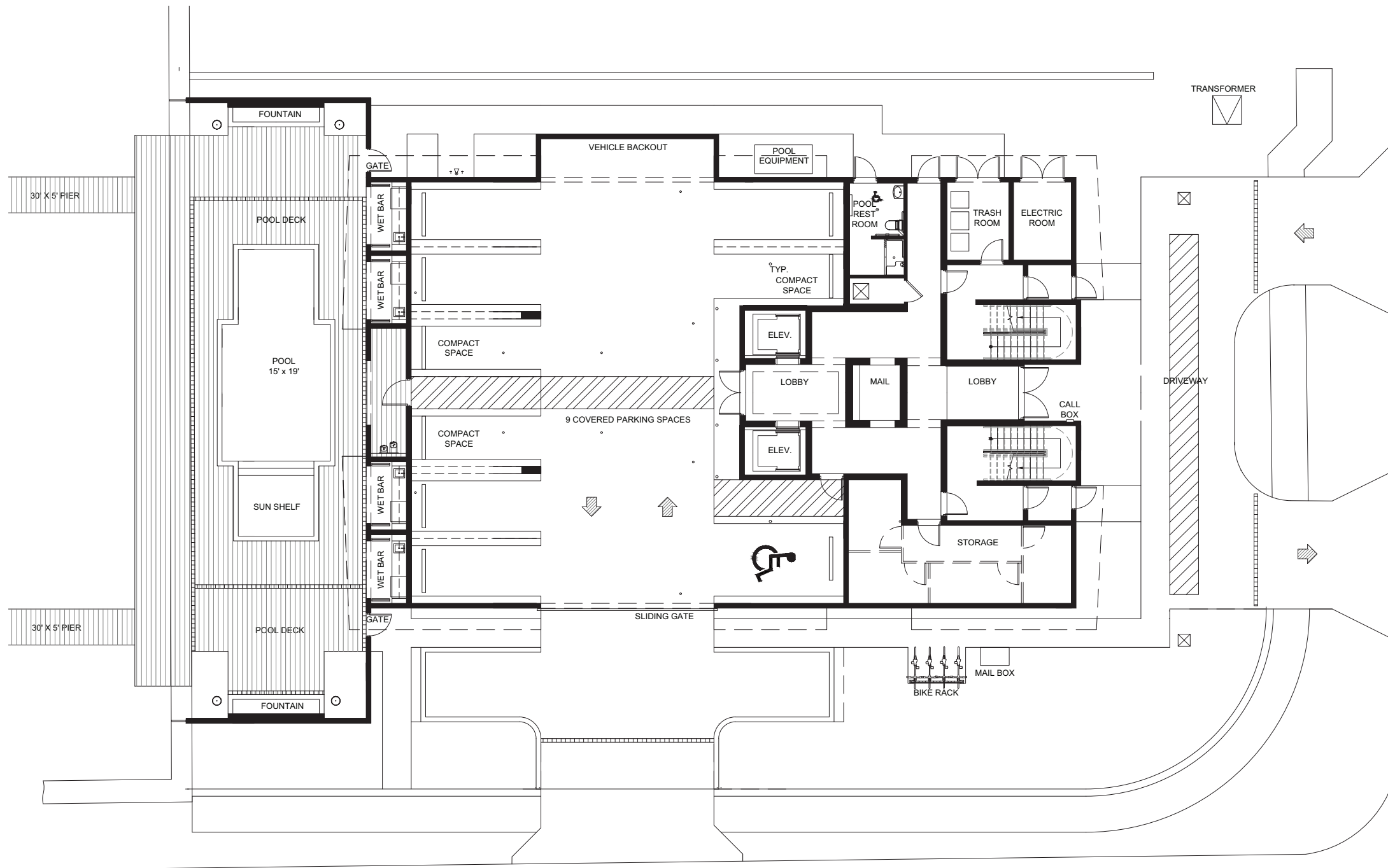
344 VENETIAN DRIVE
DELRAY BEACH, FLORIDA
\$3.495 MILLION

BEDROOMS 3
BATHS 3.1
TOTAL SQ. FT. 3,476±

PascalLiguoriAndSon.com



SINGLE LEVEL LIVING DIRECT INTRACOASTAL



Ground Floor Plan
NOT TO SCALE

First and Second Floor Plan
NOT TO SCALE